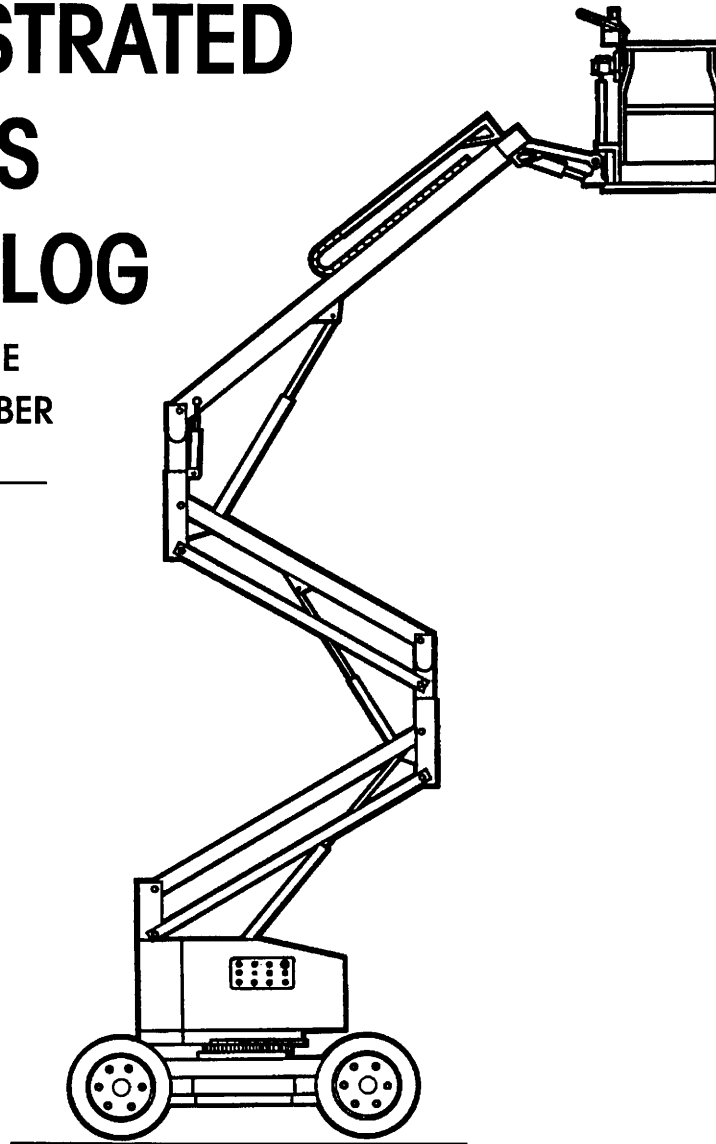


**EAGLE**  
**41/24**  
**Godfrey Howden**

# ILLUSTRATED PARTS CATALOG

FOR MACHINE  
SERIAL NUMBER

---



Art # A00.00417S

Part No. 89-412995 • Revision "A.2" dated Oct. 1995 •

# TABLE OF CONTENTS

## INTRODUCTION

## PRIMARY MACHINE COMPONENT GROUPS

### SECTION 1: UNDERCARRIAGE

01.17: UNDERCARRIAGE ASSEMBLY (SPECIAL)

### SECTION 2: SUPERSTRUCTURE

02.25: SUPERSTRUCTURE ASSEMBLY (SPECIAL)

### SECTION 3: BOOM

03.14: BOOM ASSEMBLY (SPECIAL)

### SECTION 4: PLATFORM

04.17: PLATFORM ASSEMBLY (SPECIAL)

### SECTION 6: VALVE BANK

06.18: VALVE BANK ASSEMBLY

### SECTION 7: GROUND CONTROL BOX

07.18: GROUND CONTROL BOX (SPECIAL)

### SECTION 8: ENGINE ASSEMBLY

08.23: ENGINE ASSEMBLY, ONAN GAS (SPECIAL)

### SECTION 9: PLATFORM CONTROL CONSOLE

09.19: PLATFORM CONTROL CONSOLE (SPECIAL)

### SECTION 12: PUMPS

12.09: PUMP ASSEMBLY, HYDRAULIC (SPECIAL)

### SECTION 21: PLATFORM ROTATOR

21.01: PLATFORM ROTATOR

### SECTION 23: HYDRAULIC MANIFOLD

23.07: VALVE ASSEMBLY (SPECIAL)

## **TABLE OF CONTENTS (CONTINUED)**

### **SECTION 26: MOTORS**

**26.05:** WHEEL MOTOR AND BRAKE ASSEMBLY (SPECIAL)

**26.06:** TORQUE HUB ASSEMBLY (SPECIAL)

### **SECTION 29: CONTROLLER**

**29.03:** DRIVE CONTROLLER ASSEMBLY

### **SECTION 99: DECALS**

**99.10:** DECALS

## INTRODUCTION

This Illustrated Parts Catalog is designed to help you identify and order the correct replacement parts for use on SIMON EAGLE 41/24 SELF-PROPELLED AERIAL WORK PLATFORMS equipped with certain modifications installed or supplied by GODFREY HOWDEN INC. All parts represented here are manufactured and supplied in accordance with Simon Aerials quality standards. We recommend that you use GENUINE SIMON AERIALS PARTS to insure maximum SAFETY and PERFORMANCE.

Prices for all parts listed in this Catalog can be found in a separate Spare Parts Price List. Please contact Simon Aerials Parts Department for the latest edition of the Spare Parts Price List.

## HOW TO USE THIS CATALOG

The Cover Page indicates the specific model or models covered by this Parts Catalog.

The "Table of Contents" pages list the specific sections, pages and page titles that are relevant to this model, and contained in this Catalog. Only those pages that refer specifically to GODFREY HOWDEN-modified EAGLE 41/24 machines are included in this Catalog. Only items provided by SIMON AERIALS INC. are shown in this Catalog. Other items on these special machines may have been provided by GODFREY HOWDEN INC. or other suppliers. Please contact those suppliers for these parts.

The "Primary Machine Component Groups" page illustrates the four major assemblies, along with their "Section" number.

The Parts Catalog is divided into "Sections", numbered from 1 through 99. Each section contains the individual parts that make up a major component, assembly or item. The first four sections (1 through 4) contain the major assemblies, or "Primary Machine Component Groups". Sections that follow contain sub-assemblies or components of these "major" assemblies.

If a part number is followed by a plate number in the "SEE SECTION" column, refer to the plate indicated for a further breakdown of components for that part number. Items with indented descriptions are components of the non-indented item directly above.

When selecting parts for a specific machine, be sure to verify the machine model number, and serial number or date code (found on the data plate). When ordering parts, always give:

1. Model and Serial Number
2. Item Part Number and Description
3. Order Quantity

If a part number is not listed for a selected item, please provide this additional information:

4. Parts Plate number, Item Number and Description of the desired item, OR
5. Part Number of the next assembly (Parent Part), if the desired item is not listed.

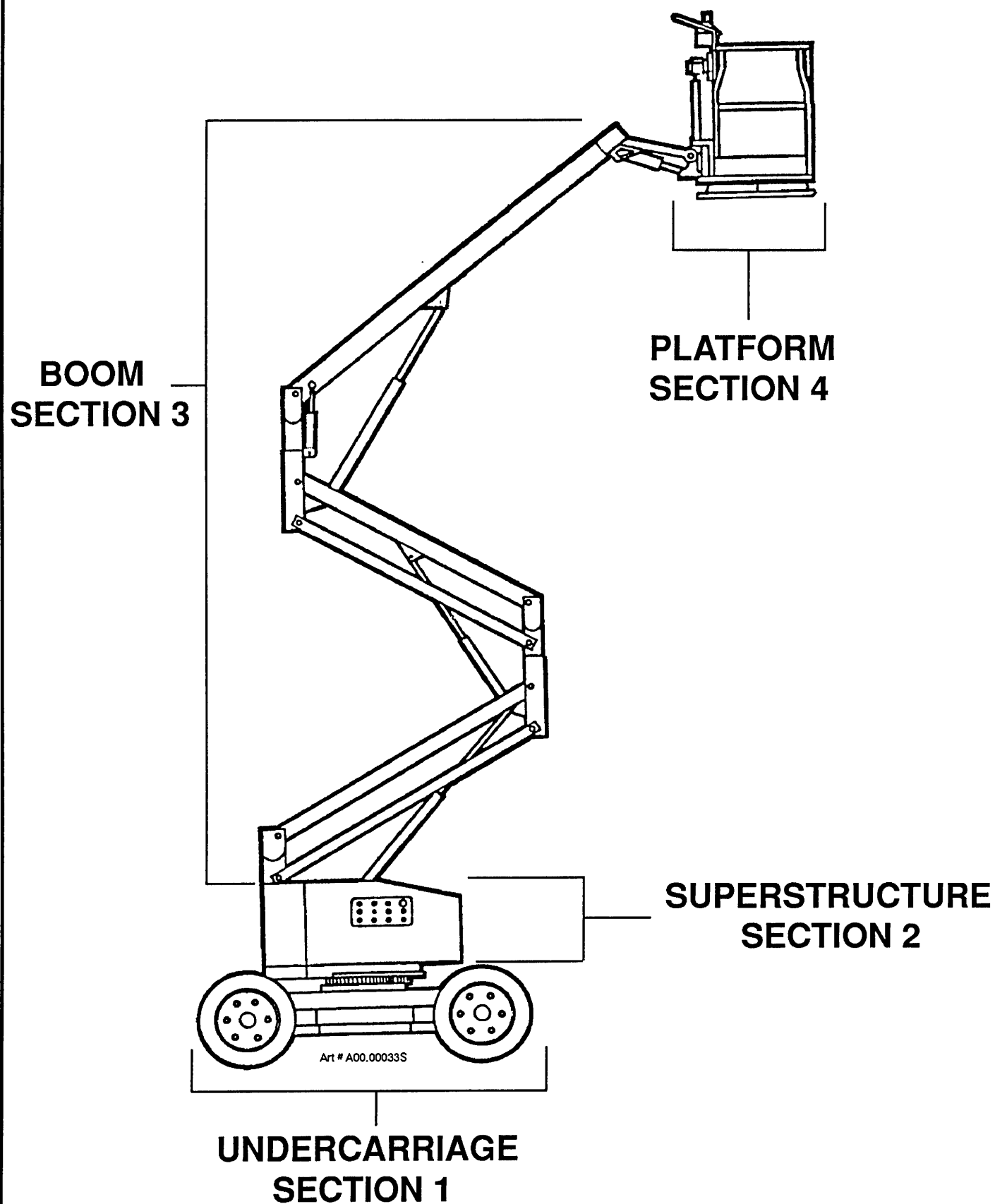
Some assembled items, such as hydraulic cylinders, may have been supplied by more than one source. While the assemblies may be able to be used interchangeably, FOR SAFETY'S SAKE, do not mix components or repair kits. Please confirm the make of the assembly on the unit before ordering or installing replacement parts.

Left and right-hand parts should be determined as though you are standing at the Platform Control Console, with the Platform in stowed position (over the non-steering axle). All dimensions are in inches unless otherwise specified.

SIMON AERIALS INC. reserves the right to change, improve, modify or expand features of its equipment. Therefore, specifications, models or equipment are subject to change without notice, and without incurring obligation to change, improve, modify or expand features of previously delivered units.

All SIMON AERIALS INC. manuals are periodically updated to reflect changes that occur in the equipment. Please contact Simon Aerials Technical Support Department with any questions you may have regarding your particular machine, or the availability of more recent manuals.





TITLE

PRIMARY MACHINE COMPONENT GROUPS

SIMON AERIALS INC.

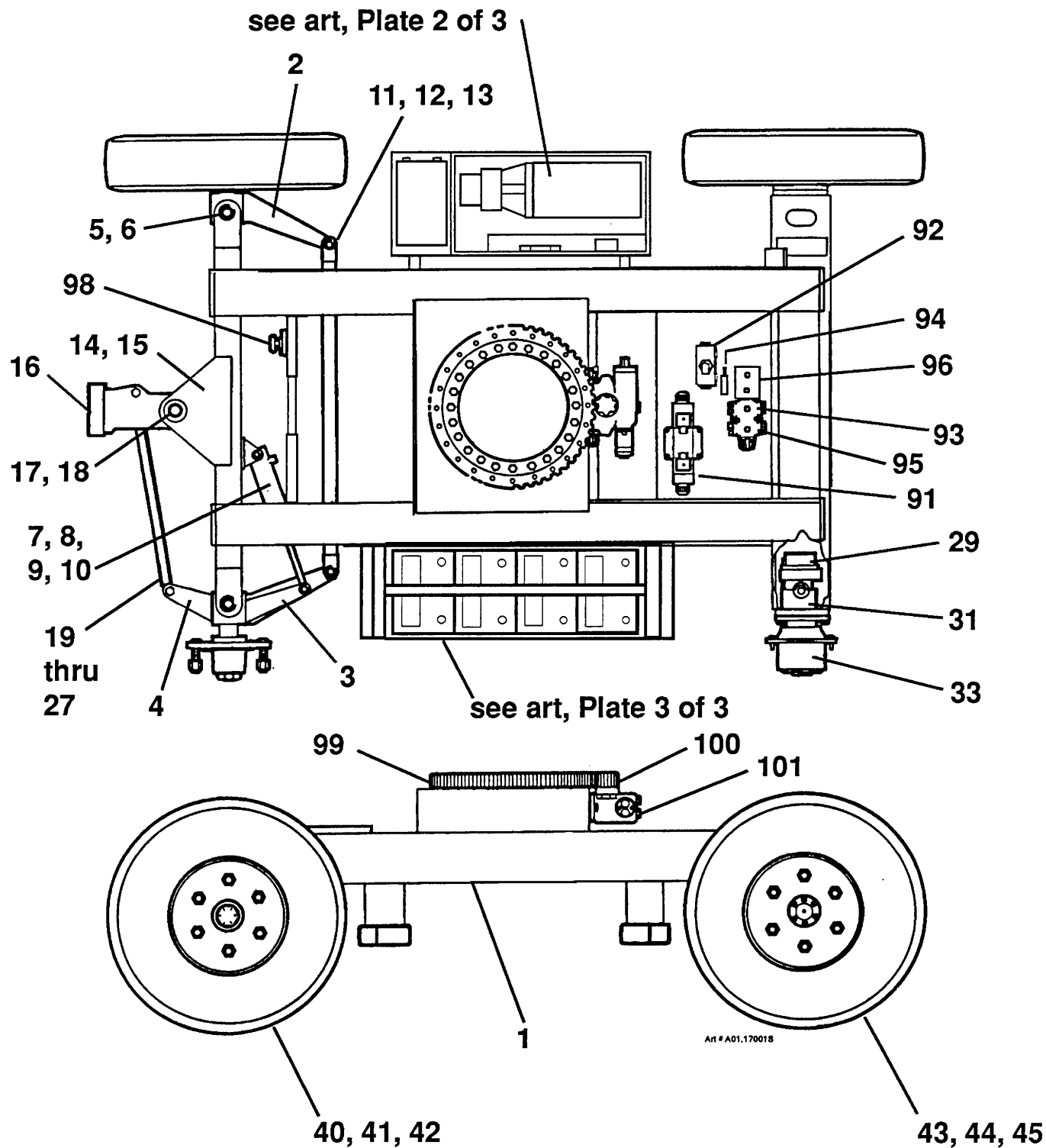
PART  
NO.PLATE  
NO.

# PARTS LIST

| ITEM | PART NO   | SEE<br>SECTION | DESCRIPTION                            | QTY. |
|------|-----------|----------------|--|------|
| 1    | 2130300   |                | UNDERCARRIAGE WELDMENT                 | 1    |
| 2    | 02-016500 |                | SPINDLE ASSEMBLY, RIGHT                | 1    |
| 3    | 02-016600 |                | SPINDLE ASSEMBLY, LEFT                 | 1    |
| 4    | 2114430   |                | BRACKET, SPINDLE (left)                | 1    |
| 5    | 10-080700 |                | PIN, SPINDLE (King pin)                | 2    |
| 6    |           |                | RING, SPINDLE PIN RETAINING            | 4    |
| 7    | 04-026800 |                | CYLINDER, STEER                        | 1    |
| 8    | 10-080500 |                | PIN, STEER CYLINDER (Case end)         | 1    |
| 9    | 10-080600 |                | PIN, STEER CYLINDER (Rod end)          | 1    |
| 10   |           |                | RING, STEER CYLINDER PIN RETAINING     | 4    |
| 11   | 10-080300 |                | TIE ROD                                | 1    |
| 12   | 10-080400 |                | PIN, TIE ROD                           | 2    |
| 13   |           |                | RING, TIE ROD PIN RETAINING            | 4    |
| 14   | 2128690   |                | PLATE, CENTER STEER ARM (Upper)        | 1    |
| 15   | 2128700   |                | PLATE, CENTER STEER ARM (Lower)        | 1    |
| 16   | 2114470   |                | ARM, CENTER STEER                      | 1    |
| 17   | 2114400   |                | PIN, CENTER STEER ARM                  | 1    |
| 18   |           |                | RING, CENTER STEER ARM PIN RETAINING   | 2    |
| 19   | 2114340   |                | TIE ROD ASSEMBLY, TOW BAR              | 1    |
| 20   | 2114370   |                | TUBE, TIE ROD [22-1/8" (562 mm) long]  | 1    |
| 21   | 08-007100 |                | END, TIE ROD                           | 2    |
| 22   | 07-047122 |                | NUT, JAM (3/4"-16, Grade 2)            | 2    |
| 23   |           |                | PIN, TIE ROD (Bracket end)             | 1    |
| 24   |           |                | PIN, TIE ROD (Yoke end)                | 1    |
| 25   |           |                | RETAINING RING, TIE ROD PIN            | 4    |
| 26   | 08-011400 |                | BEARING, SLEEVE                        | 2    |
| 27   | 08-040900 |                | RING, SNAP (1-1/2")                    | 1    |
| 28   | 2129140   |                | DRIVE HUB ASSEMBLY                     | 2    |
| 29   | 01-016700 | 26.05          | DRIVE MOTOR                            | 1    |
| 30   | 01-016701 |                | SEAL KIT, MOTOR                        | 1    |
| 31   | 01-018500 | 26.05          | BRAKE                                  | 1    |
| 32   | 01-012101 |                | SEAL KIT, BRAKE                        | 1    |
| 33   | 02-021200 | 26.06          | HUB, PLANETARY                         | 1    |
| 34   |           |                | SEAL KIT, PLANETARY HUB                | 1    |
| 35   | 02-021300 |                | QUICK DISCONNECT                       | 2    |
| 36   | 06-046800 |                | ELBOW, 45° STRAIGHT THREAD (4 V50X)    | 2    |
| 37   | 06-098300 |                | CONNECTOR, STRAIGHT THREAD (10 FF50X)  | 4    |
| 38   | 07-003085 |                | BOLT, HEX HEAD (1/2"-13 x 1", Grade 5) | 8    |
| 39   | 07-060018 |                | WASHER, FLAT (1/2" SAE)                | 8    |

TITLE UNDERCARRIAGE ASSEMBLY, 41/24 (SPECIAL) (PLATE 1 OF 3)

|           |       |                           |               |                  |
|-----------|-------|---------------------------|---------------|------------------|
| PLATE NO. | 01.17 | <b>SIMON AERIALS INC.</b> | REV. 11/18/91 | PART NO. 2130170 |
|-----------|-------|---------------------------|---------------|------------------|



TITLE UNDERCARRIAGE ASSEMBLY, 41/24 (SPECIAL) (PLATE 1 OF 3)

**SIMON AERIALS INC.**

REV. 11/18/91

PART NO. 2130170

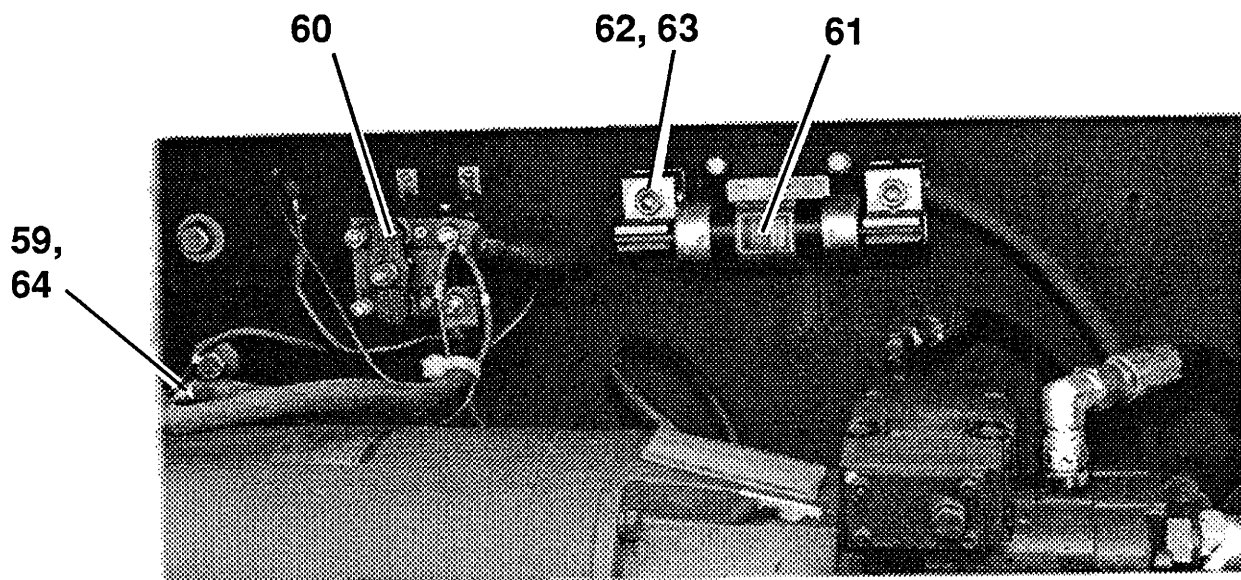
PLATE NO. 01.17

## PARTS LIST

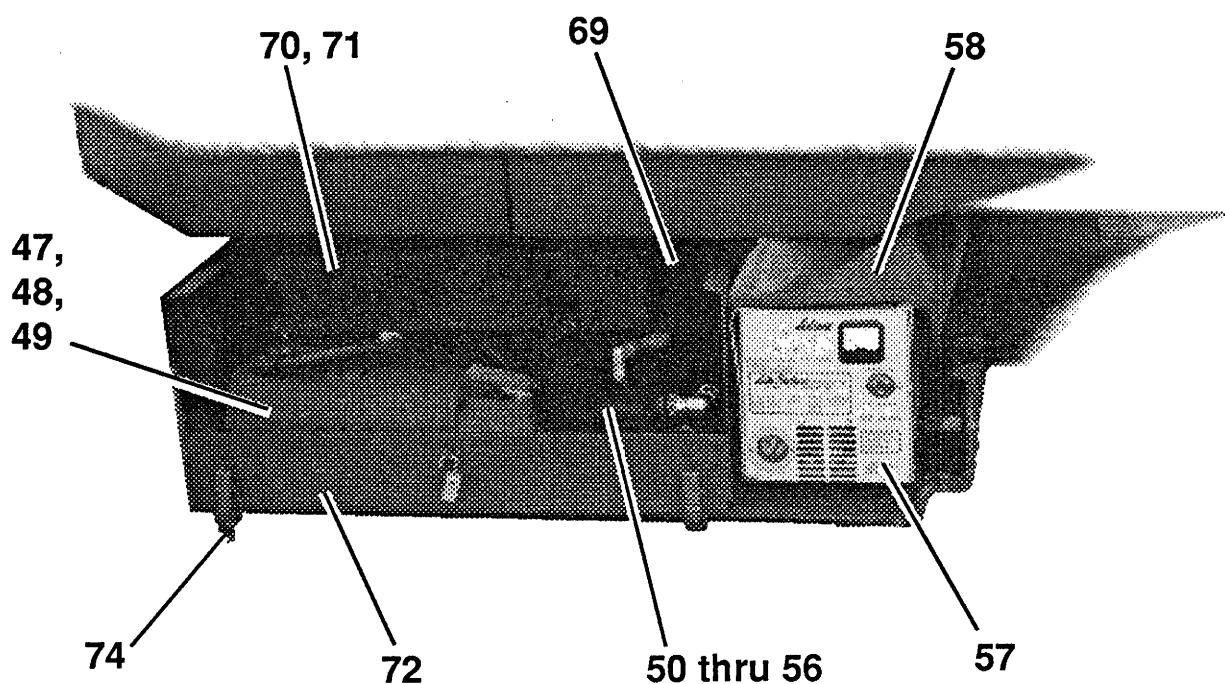
| ITEM | PART NO   | SEE<br>SECTION | DESCRIPTION                              | QTY. |
|------|-----------|----------------|--|------|
| 40   | 3514540   |                | TIRE AND WHEEL ASSEMBLY, STEER           | 2    |
| 41   | 02-021400 |                | TIRE, L78 - 15 LT                        | 1    |
| 42   | 02-010800 |                | WHEEL, STEER                             | 1    |
| 43   | 3514550   |                | TIRE AND WHEEL ASSEMBLY, DRIVE           | 2    |
| 44   | 02-021400 |                | TIRE, L78 - 15 LT                        | 1    |
| 45   | 2129420   |                | WHEEL, DRIVE                             | 1    |
| 46   | 2130150   |                | POWER UNIT ASSEMBLY (48 Volt)            | 1    |
| 47   | 03-436600 |                | MOTOR (48 Volt, 7 HP)                    | 1    |
| 48   | 07-003043 |                | BOLT, HEX HEAD (3/8"-16 x 3/4", Grade 5) | 4    |
| 49   | 07-050016 |                | NUT, STOP (3/8"-16, Grade 5)             | 4    |
| 50   | 01-083900 | 12.09          | PUMP, HYDRAULIC                          | 1    |
| 51   | 07-003045 |                | BOLT, HEX HEAD (3/8"-16 x 1", Grade 5)   | 2    |
| 52   | 07-065016 |                | WASHER, HELICAL LOCK (3/8")              | 2    |
| 53   | 02-021500 |                | COUPLING (5/8"-3/16" bore)               | 1    |
| 54   | 02-021600 |                | ADAPTER                                  | 1    |
| 55   | 07-003043 |                | BOLT, HEX HEAD (3/8"-16 x 3/4", Grade 5) | 4    |
| 56   | 07-065016 |                | WASHER, HELICAL LOCK (3/8")              | 4    |
| 57   | 03-408200 |                | BATTERY CHARGER (48 Volt DC)             | 1    |
| 58   | 10-086300 |                | COVER, BATTERY CHARGER (neoprene coated) | 1    |
| 59   | 03-416505 |                | FUSE (3AG Series, 5 Amp)                 | 1    |
| 60   | 03-437400 |                | CONTACTOR (48 Volt)                      | 1    |
| 61   | 03-437600 |                | FUSE (48 Volt, 150 Amp)                  | 1    |
| 62   | 03-437500 |                | HOLDER, FUSE                             | 1    |
| 63   | 07-003003 |                | BOLT, HEX HEAD (1/4"-20 x 3/4", Grade 5) | 4    |
| 64   | 03-437800 |                | HOLDER, FUSE                             | 1    |
| 65   | 03-439900 |                | CABLE, BATTERY [84" (2.13 M) long]       | 1    |
| 66   | 03-440000 |                | CABLE, BATTERY [102" (2.59 M) long]      | 1    |
| 67   | 03-441000 |                | CABLE, BATTERY [6" (152 mm) long]        | 1    |
| 68   | 03-442000 |                | CABLE, BATTERY [10" (254 mm) long]       | 1    |
| 69   | 10-084200 |                | GROMMET                                  | 2    |
| 70   | 2129830   |                | COVER, ELECTRICAL COMPONENTS (inside)    | 1    |
| 71   | 07-003003 |                | BOLT, HEX HEAD (1/4"-20 x 3/4", Grade 5) | 2    |
| 72   | 2129880   |                | ENCLOSURE ASSEMBLY, ELECTRIC             | 1    |
| 73   | 2129860   |                | COVER, ELECTRICAL ASSEMBLY               | 1    |
| 74   | 10-089200 |                | LATCH, DRAW BOLT (Heavy duty)            | 2    |
|      |           |                |  |      |
|      |           |                |  |      |

TITLE UNDERCARRIAGE ASSEMBLY, 41/24 (SPECIAL) (PLATE 2 OF 3)

|           |       |                           |               |                  |
|-----------|-------|---------------------------|---------------|------------------|
| PLATE NO. | 01.17 | <b>SIMON AERIALS INC.</b> | REV. 11/18/91 | PART NO. 2130170 |
|-----------|-------|---------------------------|---------------|------------------|



Enlarged view of power unit upper area with cover (item 70) removed



48 volt power unit assembly (item 46) with cover (item 73) removed

TITLE UNDERCARRIAGE ASSEMBLY, 41/24 (SPECIAL) (PLATE 2 OF 3)

**SIMON AERIALS INC.**

REV. 11/18/91

PART NO. 2130170

PLATE NO. 01.17

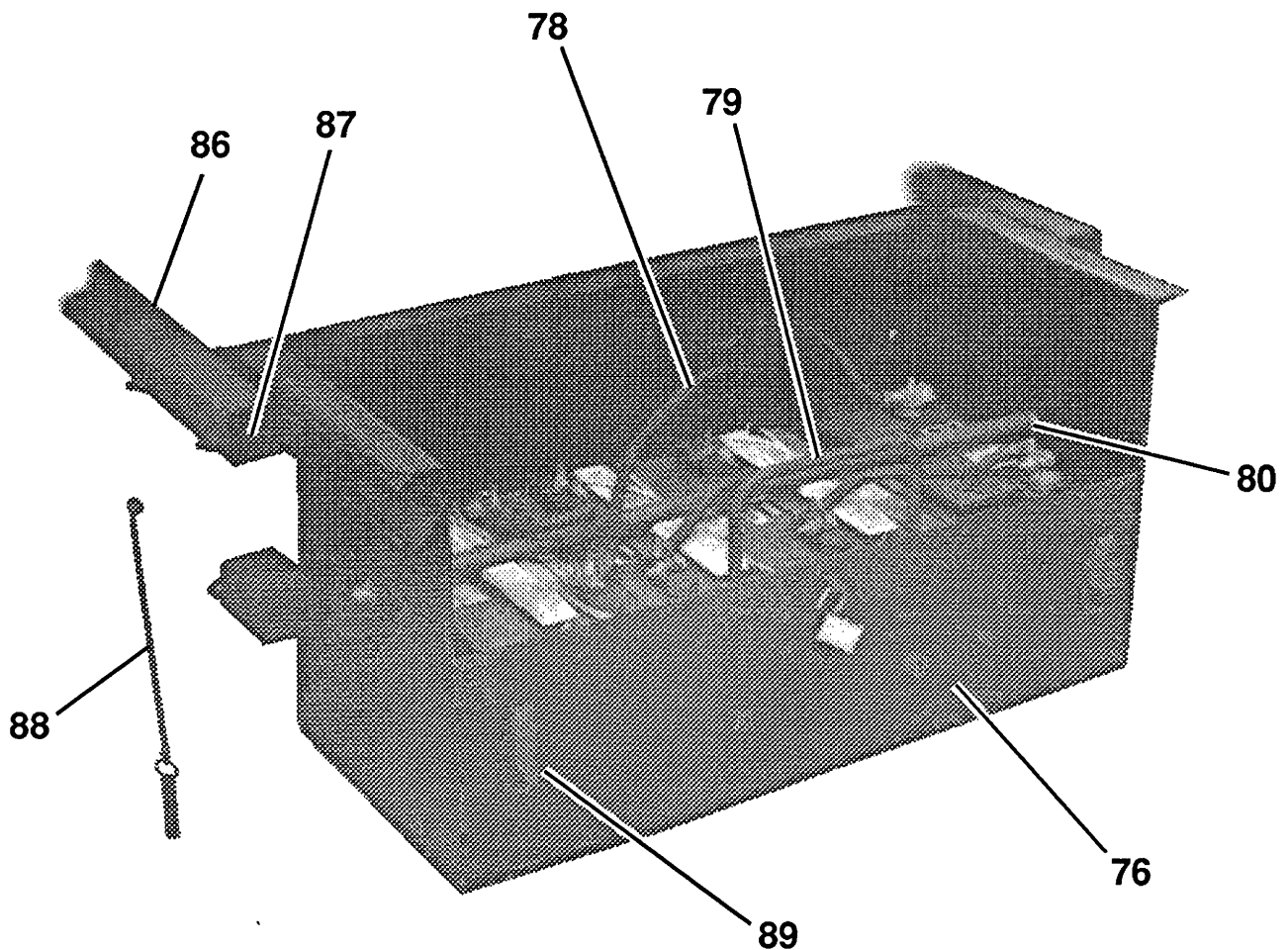
## PARTS LIST

| ITEM | PART NO   | SEE<br>SECTION | DESCRIPTION                                  | QTY. |
|------|-----------|----------------|--|------|
| 75   | 2130160   |                | BATTERY BOX ASSEMBLY                         | 1    |
| 76   | 2113700   |                | ENCLOSURE, BATTERY BOX                       | 1    |
| 77   | 2113570   |                | COVER, BATTERY BOX                           | 1    |
| 78   | 03-400900 |                | BATTERY (12 Volt, 105 Amp hour)              | 4    |
| 79   | 2119620   |                | TRAY, BATTERY                                | 1    |
| 80   | 2114160   |                | BRACKET, BATTERY HOLD DOWN                   | 1    |
| 81   | 03-448400 |                | CABLE, BATTERY [12" (305 mm) long, 90° ends] | 3    |
| 82   | 03-448500 |                | CABLE, BATTERY [18" (457 mm) long]           | 1    |
| 83   | 03-448600 |                | CABLE, BATTERY [46" (1.2 M) long]            | 1    |
| 84   | 03-443000 |                | CABLE, BATTERY (Positive)                    | 1    |
| 85   | 03-444000 |                | CABLE, BATTERY (Negative)                    | 1    |
| 86   | 2113660   |                | BRACKET, BATTERY BOX ROLLER                  | 2    |
| 87   | 2113750   |                | ROLLER ASSEMBLY                              | 4    |
| 88   | 07-090072 |                | PIN, QUICK RELEASE (1/2" dia. x 2-1/2" grip) |      |
| 89   | 10-089200 |                | LATCH, DRAW BOLT (Heavy duty)                | 2    |
| 90   | 3514580   | 23.07          | VALVE ASSEMBLY, UNDERCARRIAGE                | 1    |
| 91   | 01-077400 |                | VALVE, DIRECTIONAL CONTROL                   | 1    |
| 92   | 01-012400 |                | VALVE, MOTION CONTROL                        | 1    |
| 93   | 01-084200 |                | VALVE, SERIES/ PARALLEL                      | 1    |
| 94   | 01-018900 |                | VALVE, FLOW CONTROL (Restrictor valve)       | 1    |
| 95   | 01-037100 |                | VALVE, 3 WAY SOLENOID                        | 1    |
| 96   | 2131560   |                | MANIFOLD, VALVE                              | 1    |
| 97   | 01-069300 |                | VALVE, SOLENOID OPERATED (12 Volt)           | 1    |
| 98   | 01-010900 |                | VALVE, SELECTOR                              | 1    |
| 99   | 08063700  |                | SWING BEARING                                | 1    |
| 100  | 01076500  |                | SWING MOTOR                                  | 1    |
| 101  | 02017800  |                | GEAR BOX                                     | 1    |
|      |           |                |  |      |
|      |           |                |  |      |
|      |           |                |  |      |
|      |           |                |  |      |
|      |           |                |  |      |
|      |           |                |  |      |
|      |           |                |  |      |
|      |           |                |  |      |
|      |           |                |  |      |

TITLE UNDERCARRIAGE ASSEMBLY, 41/24 (SPECIAL) (PLATE 3 OF 3)

|           |       |                           |               |                  |
|-----------|-------|---------------------------|---------------|------------------|
| PLATE NO. | 01.17 | <b>SIMON AERIALS INC.</b> | REV. 11/18/91 | PART NO. 2130170 |
|-----------|-------|---------------------------|---------------|------------------|





Battery box assembly (item 75) with cover (item 77) removed

TITLE UNDERCARRIAGE ASSEMBLY, 41/24 (SPECIAL) (PLATE 3 OF 3)

**SIMON AERIALS INC.**

REV. 11/18/91

PART NO. 2130170

PLATE NO. 01.17

## PARTS LIST

| ITEM | PART NO     | SEE SECTION | DESCRIPTION  | QTY. |
|------|-------------|-------------|--|------|
| 1    |             |             | SUPERSTRUCTURE WELDMENT  | 1    |
| 2    | 01-076500   |             | SWING MOTOR  | 1    |
| 3    | 01-017800   |             | SPEED REDUCER  | 1    |
| 4    | See index . | 07.18       | BOX ASSEMBLY, GROUND CONTROL   | 1    |
| 5    | 2119540     |             | SPACER, GROUND CONTROL MOUNTING  | 4    |
| 6    | 03-023900   |             | ALARM, TILT  | 1    |
| 7    | 3511570     |             | TANK ASSEMBLY, HYDRAULIC   | 1    |
| 8    |             |             | TANK WELDMENT, HYDRAULIC   | 1    |
| 9    | 01-002800   |             | VALVE, SHUT OFF (Ball valve) (1/2" NPT)  | 1    |
| 10   | 01-068500   |             | VALVE, SHUT OFF (Ball valve) (1" NPT)  | 3    |
| 11   | 10-080200   |             | CAP, HYDRAULIC TANK  | 1    |
| 12   | 10-080201   |             | STRAINER, FILLER CAP   | 1    |
| 13   | 01-066100   |             | PUMP, EMERGENCY HAND   | 1    |
| 14   | 01-020800   |             | VALVE, POPPET CHECK (3 P.S.I.) (.207 Bar) (.211 Kg/ cm <sup>2</sup> )                  | 1    |
| 15   | 01-012300   |             | VALVE, FLOW CONTROL [Needle valve, pressure compensating, 75 to 5 GPM (284 to 19 LPM)] | 1    |
| 16   | 01-037100   |             | VALVE, SOLENOID (3 way) (Pump unloading)   | 1    |
| 17   | See index . | 06.18       | VALVE BANK ASSEMBLY  | 1    |
| 18   | 2131290     |             | BAR, VALVE MOUNTING  | 1    |
| 19   | 2131300     |             | BRACKET, VALVE MOUNTING  | 1    |
| 20   | 03-407800   |             | SWITCH, LIMIT (High speed drive)   | 1    |
| 21   | 03-407803   |             | LEVER ARM, LIMIT SWITCH  | 1    |
| 22   | 3511560     |             | TANK ASSEMBLY, FUEL  | 1    |
| 23   |             |             | TANK WELDMENT, FUEL  | 1    |
| 24   | 01-032800   |             | VALVE, SHUT OFF (Ball valve) (1/4" NPT)  | 1    |
| 25   | 05-010011   |             | ELBOW, MALE (Nylon, 1/2" O.D. tube x 1/2" NPT)   | 2    |
| 26   | 06-082500   |             | ELBOW, MALE PIPE (1/4 CR)  | 1    |
| 27   | 11-050401   |             | FITTING, HOSE<br>(Brass, barbed, 1/4" I.D. hose, 1/4" male NPT thread)                 | 1    |
| 28   | 10-080900   |             | CAP, FUEL FILLER   | 1    |
| 29   | 05-010008   |             | SIGHT GAUGE, FUEL TANK   | 1    |
| 30   | 05-010011   |             | ELBOW, SIGHT GAUGE   | 1    |
| 31   | 01-074900   |             | FILTER ASSEMBLY, RETURN LINE   | 1    |
| 32   | 01-074901   |             | FILTER ELEMENT   | 1    |
| 33   | 01-086400   |             | FILTER, SUCTION LINE   | 1    |
| 34   | 01-081100   |             | FILTER ASSEMBLY, PRESSURE LINE   | 1    |
| 35   | 01-081101   |             | ELEMENT, PRESSURE LINE FILTER  | 1    |
| 36   | See index . | 08.23       | ENGINE ASSEMBLY (Onan 24 HP Gas)   | 1    |
| 37   | 01-021000   |             | PRESSURE GAUGE   | 1    |

TITLE SUPERSTRUCTURE ASSEMBLY, EAGLE 41/24 (SPECIAL) (PLATE 1 OF 2)

PLATE  
NO.

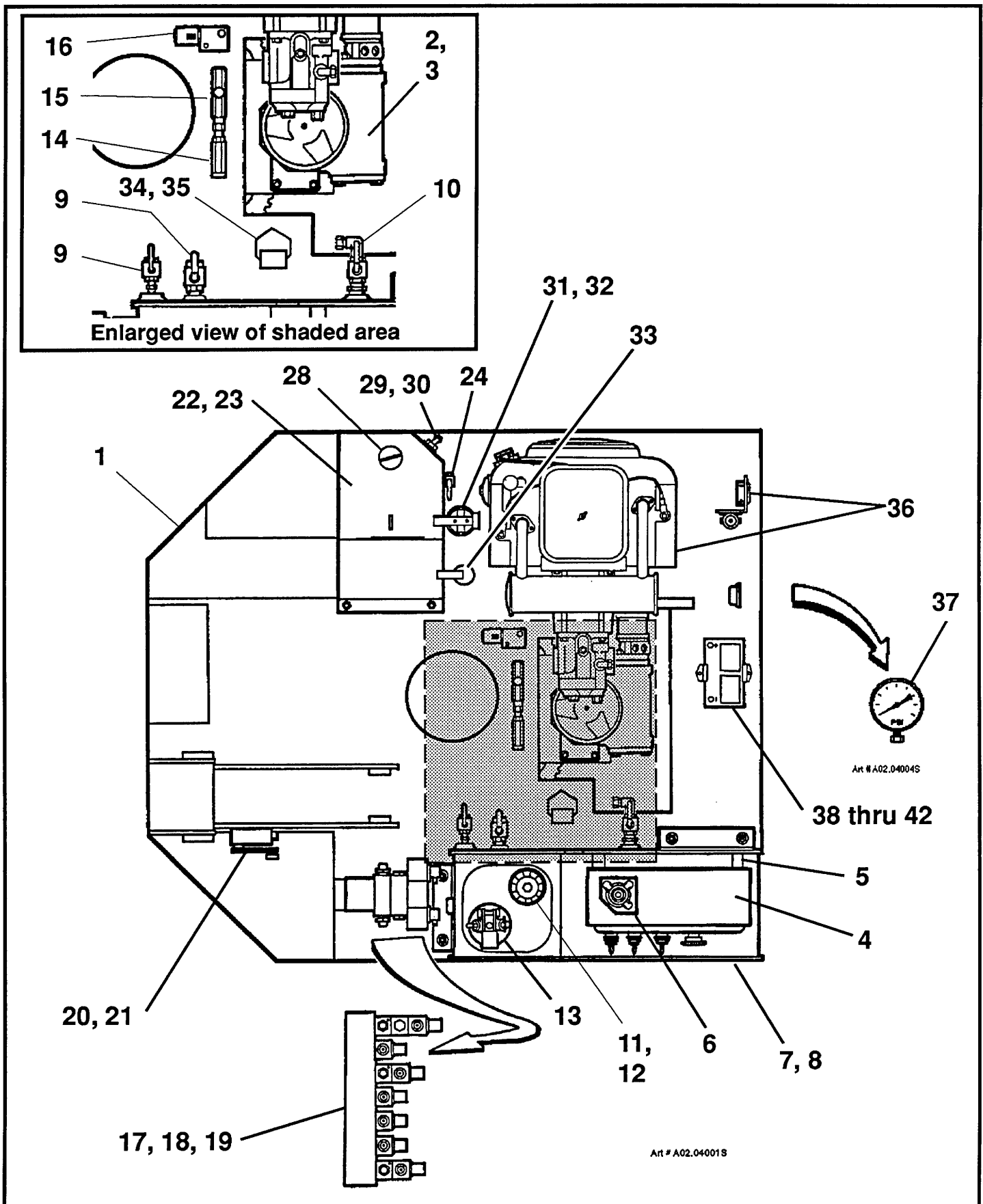
02.25

**SIMON AERIALS INC.**

NEW 11/07/91

PART  
NO.





TITLE SUPERSTRUCTURE ASSEMBLY, EAGLE 41/24 (SPECIAL) (PLATE 1 OF 2)

**SIMON AERIALS INC.**

NEW 11/07/91

PART  
NO.

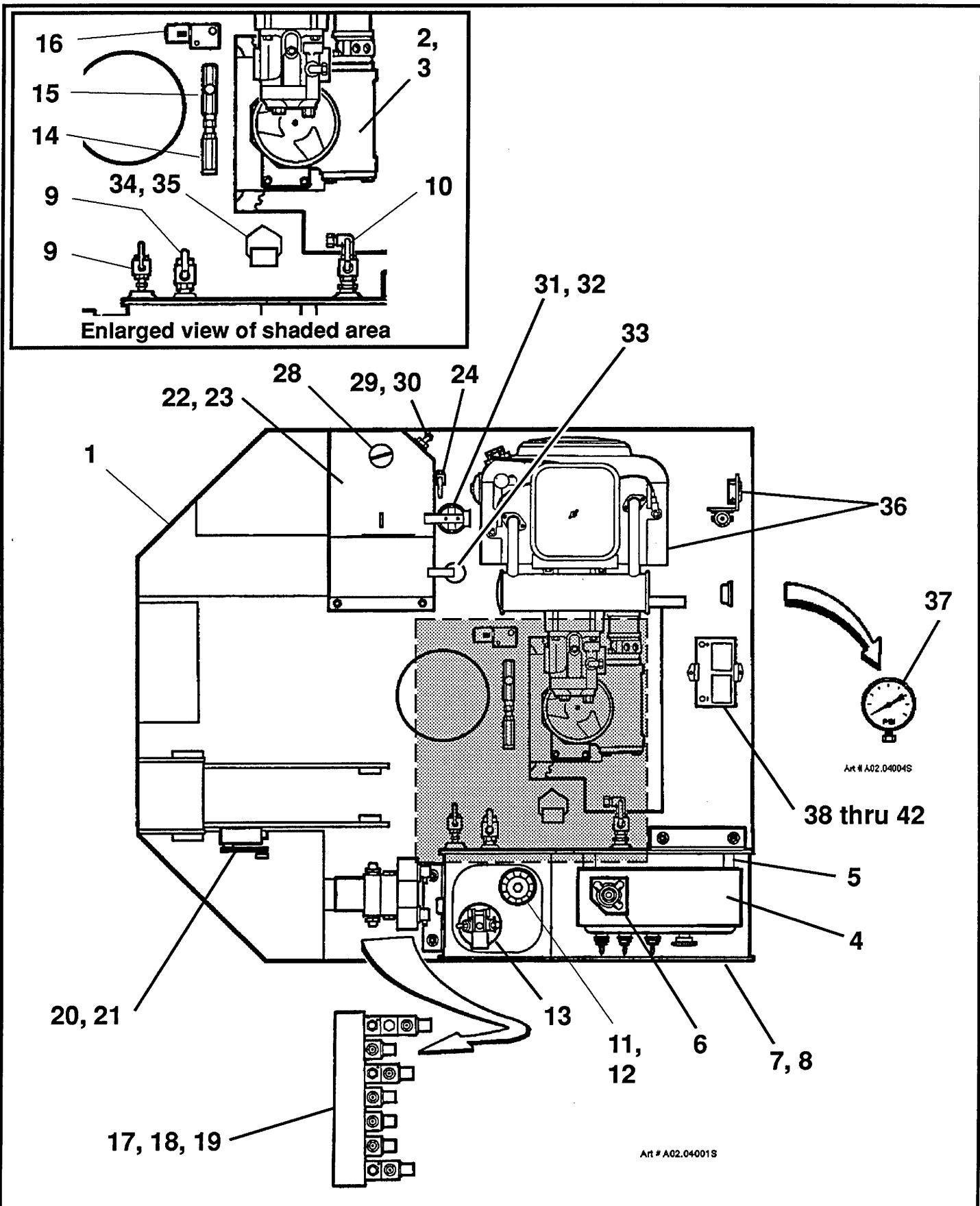
PLATE  
NO.

02.25

[illegible]

|           |       |                    |
|-----------|-------|--------------------|
| PLATE NO. | 02.25 | SIMON AERIALS INC. |
|-----------|-------|--------------------|

PART  
NO.



TITLE SUPERSTRUCTURE ASSEMBLY, EAGLE 41/24 (SPECIAL) (PLATE 2 OF 2)

**SIMON AERIALS INC.**

NEW 11/07/91

PART  
NO.

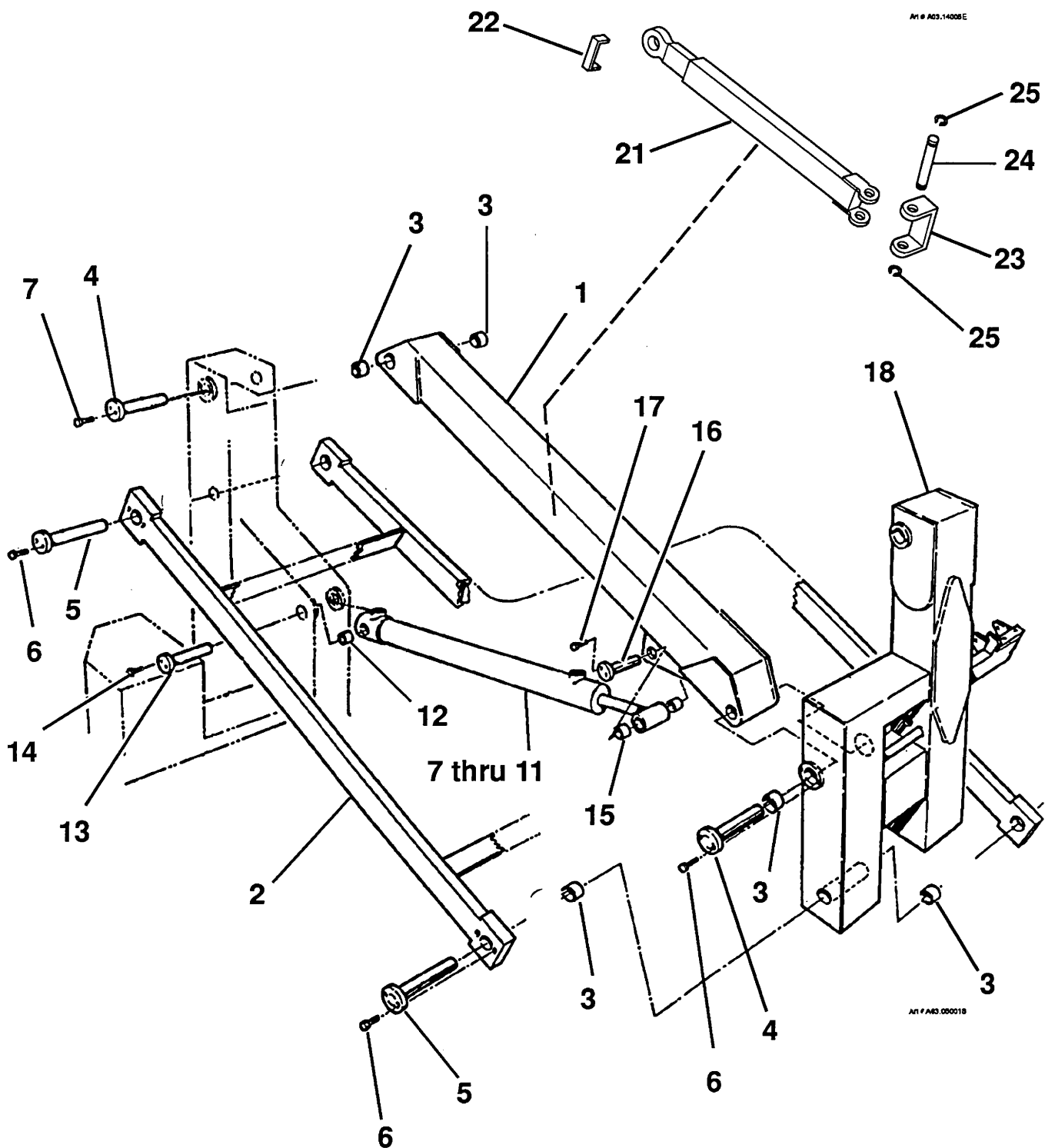
PLATE  
NO.

02.25

[illegible]

|           |       |                           |
|-----------|-------|---------------------------|
| PLATE NO. | 03.14 | <b>SIMON AERIALS INC.</b> |
|-----------|-------|---------------------------|

PART  
NO.



TITLE BOOM ASSEMBLY, 40 FOOT (12.2 M) (LOWER BOOM, PLATE 1 OF 4)

**SIMON AERIALS INC.**

REV. 01 SEP., 1993

PART  
NO.

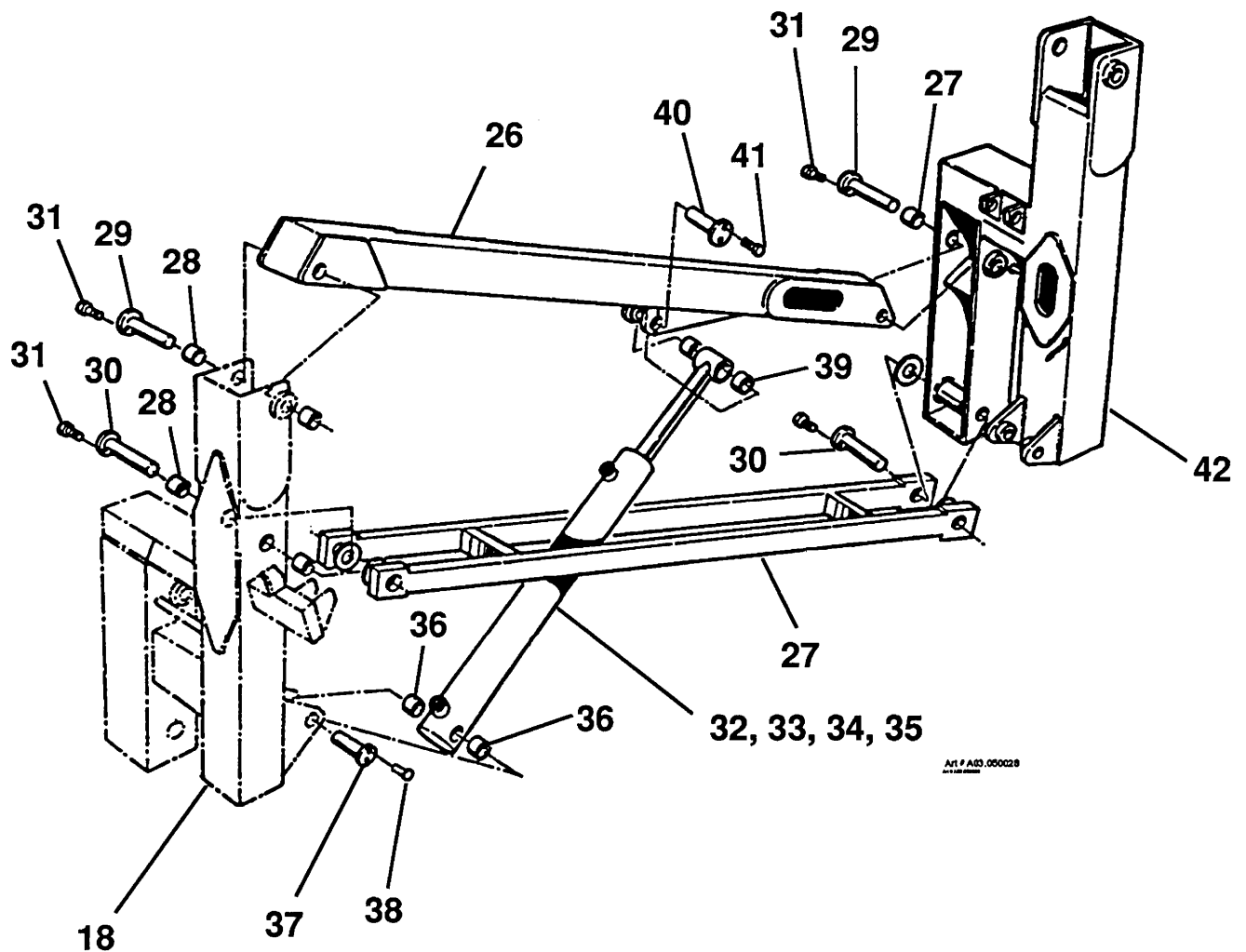
PLATE  
NO.

03.14

[illegible]

|           |       |                    |
|-----------|-------|--------------------|
| PLATE NO. | 03.14 | SIMON AERIALS INC. |
|-----------|-------|--------------------|

**PART  
NO.**



TITLE BOOM ASSEMBLY, 40 FOOT (12.2 M) (MIDDLE BOOM, PLATE 2 OF 4)

**SIMON AERIALS INC.**

REV. 01 SEP., 1993

PART  
NO.

PLATE  
NO.

03.14

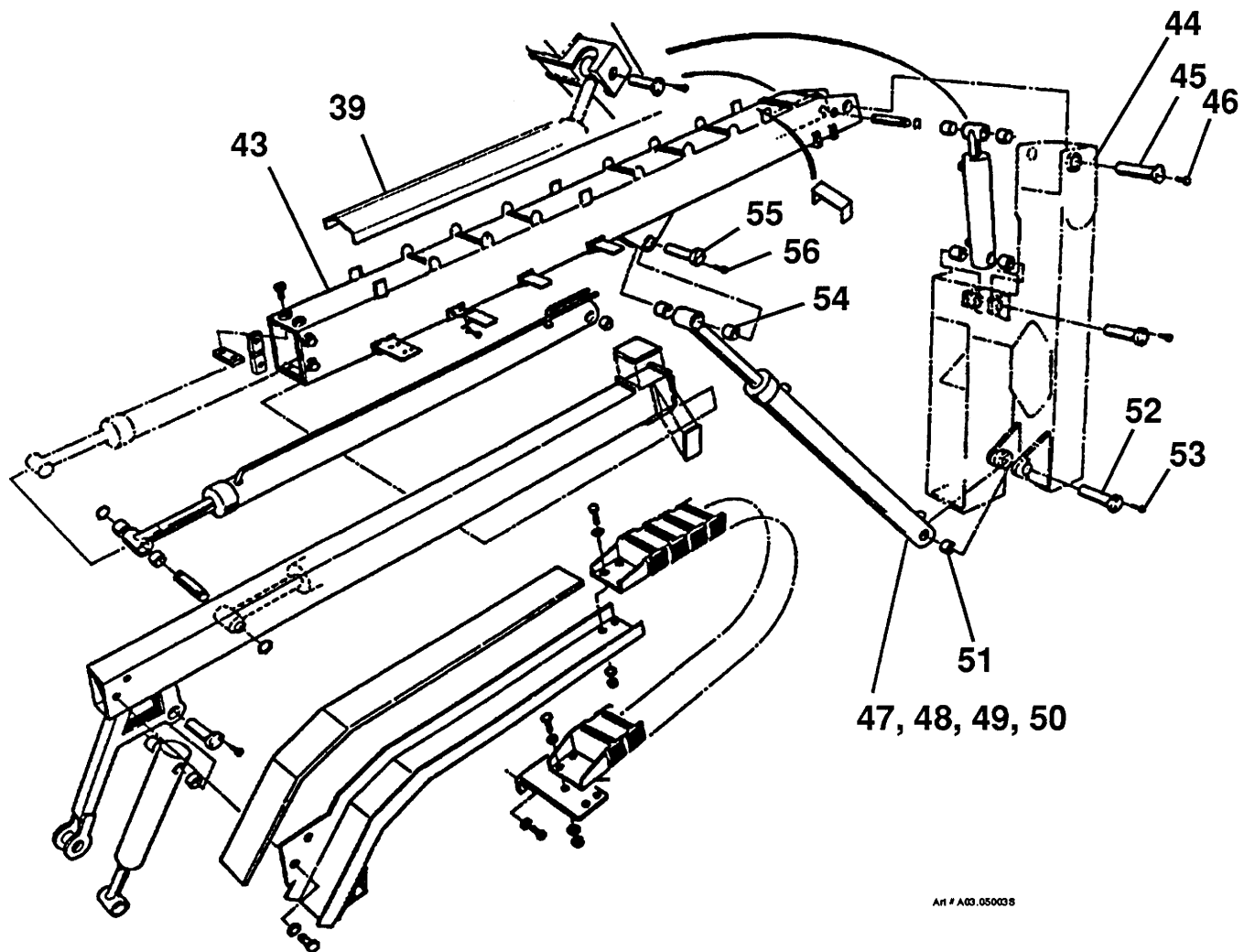


[illegible]

|           |       |                           |
|-----------|-------|---------------------------|
| PLATE NO. | 03.14 | <b>SIMON AERIALS INC.</b> |
|-----------|-------|---------------------------|

PART  
NO.





Art # A03.05003S

TITLE BOOM ASSEMBLY, 40 FOOT (12.2 M) (UPPER BOOM, PLATE 3 OF 4)

**SIMON AERIALS INC.**

REV. 01 SEP., 1993

PART  
NO.

PLATE  
NO.

03.14

## PARTS LIST

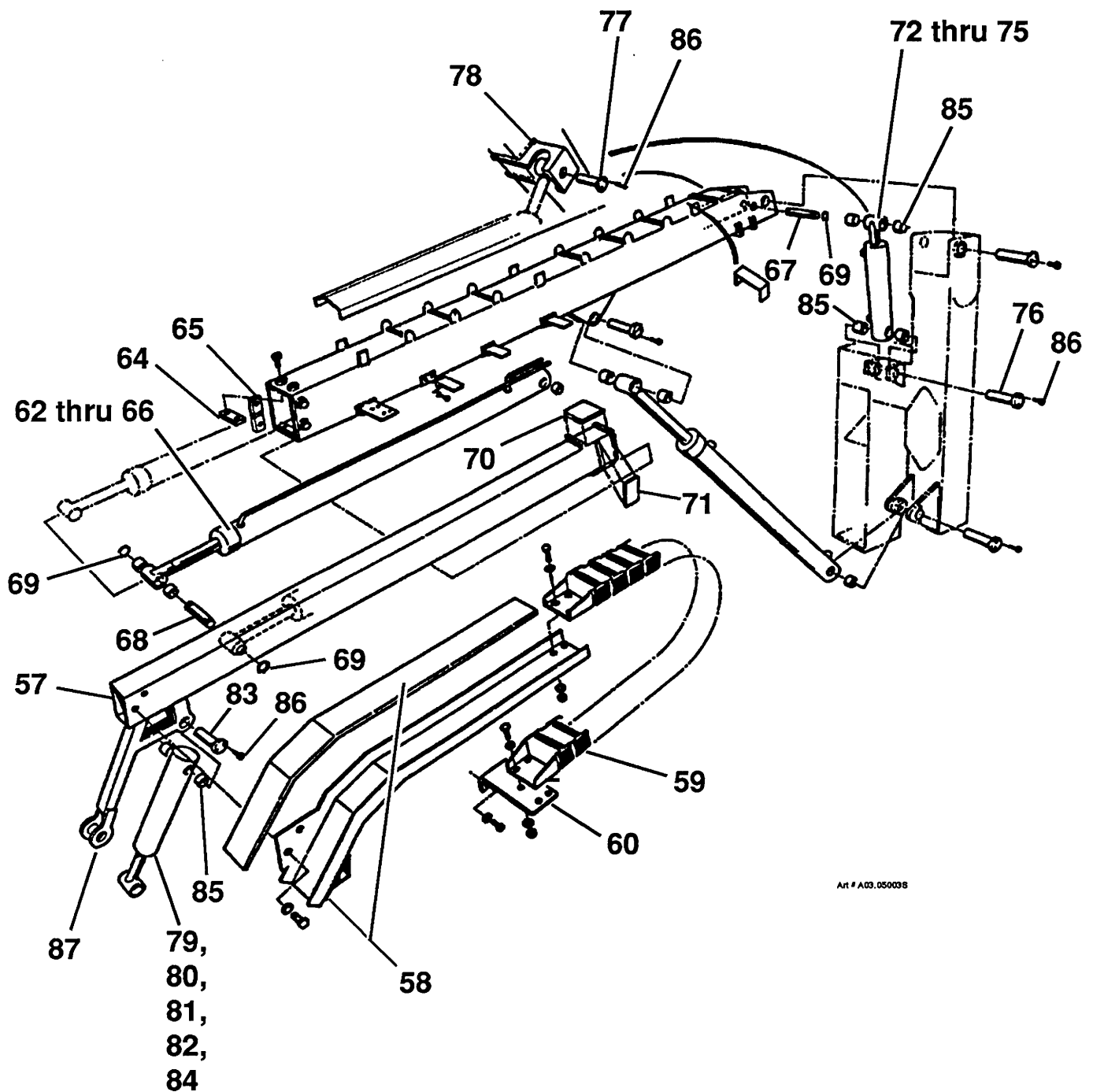
| ITEM | PART NO   | SEE<br>SECTION | DESCRIPTION                                  | QTY. |
|------|-----------|----------------|--|------|
| 57   |           |                | BOOM WELDMENT, UPPER TIP                     | 1    |
| 58   | 2115160   |                | ANCHOR WELDMENT, MOVING                      | 1    |
| 59   | 08-000700 |                | CARRIER, HOSE                                | 1    |
| 60   | 2115350   |                | MOUNTING BRACKET, CATRAC                     | 1    |
| 61   | 2130040   |                | BRACKET, CATRAC SUPPORT                      | 1    |
| 62   | 04-027200 |                | CYLINDER, TELESCOPE                          | 1    |
| 63   | 04-027202 |                | SEAL KIT, TELESCOPE CYLINDER                 | 1    |
| 64   | 04-027203 |                | SEAL, WIPER                                  | 1    |
| 65   | 04-027204 |                | RING, BACKUP                                 | 1    |
| 66   | 04-027201 |                | CARTRIDGE, TELESCOPE CYLINDER HOLDING VALVE  | 1    |
| 67   | 10-083900 |                | PIN, TELESCOPE CYLINDER (Case end)           | 1    |
| 68   | 10-081700 |                | PIN, TELESCOPE CYLINDER (Rod end)            | 1    |
| 69   |           |                | RING, RETAINING                              | 4    |
| 70   | 10-082000 |                | PAD, UPPER AND LOWER WEAR                    | 2    |
| 71   | 10-082100 |                | PAD, SIDE WEAR (Slider pad)                  | 2    |
| 72   | 04-027000 |                | CYLINDER, MASTER LEVELING                    | 1    |
| 73   | 04-026801 |                | SEAL KIT, LEVELING CYLINDER                  | 1    |
| 74   | 01-067601 |                | VALVE, LEVELING (Solenoid operated)          | 1    |
| 75   | 01-069600 |                | CARTRIDGE, LEVELING VALVE                    | 1    |
| 76   | 10-082400 |                | PIN, MASTER CYLINDER (Case end)              | 1    |
| 77   | 10-082200 |                | PIN, MASTER CYLINDER (Rod end)               | 1    |
| 78   | 10-103200 |                | BRACKET, MASTER CYLINDER                     | 1    |
| 79   | 04-027100 |                | CYLINDER, SLAVE LEVELING                     | 1    |
| 80   | 04-026801 |                | SEAL KIT, LEVELING CYLINDER                  | 1    |
| 81   | 01-069500 |                | VALVE, HOLDING (Slave cylinder)              | 1    |
| 82   | 01-067500 |                | CHECK VALVE, PILOT OPERATED (Slave cylinder) | 1    |
| 83   | 10-081600 |                | PIN, SLAVE CYLINDER (Case end)               | 1    |
| 84   | 10-082500 |                | PIN, SLAVE CYLINDER (Rod end)                | 1    |
| 85   | 08-044700 |                | BUSHING                                      | 8    |
| 86   |           |                | RING, RETAINING                              | 8    |
| 87   | 08-059100 |                | BUSHING                                      | 2    |
|      |           |                |  |      |
|      |           |                |  |      |
|      |           |                |  |      |
|      |           |                |  |      |

**TITLE** BOOM ASSEMBLY, 40 FOOT (12.2 M) (UPPER BOOM, PLATE 4 OF 4)

**PLATE NO.** 03.14 **SIMON AERIALS INC.**

REV. 01 SEP., 1993

**PART NO.**



Art # A03.050038

TITLE BOOM ASSEMBLY, 40 FOOT (12.2 M) (UPPER BOOM, PLATE 4 OF 4)

**SIMON AERIALS INC.**

REV. 01 SEP., 1993

PART  
NO.

PLATE  
NO.

03.14

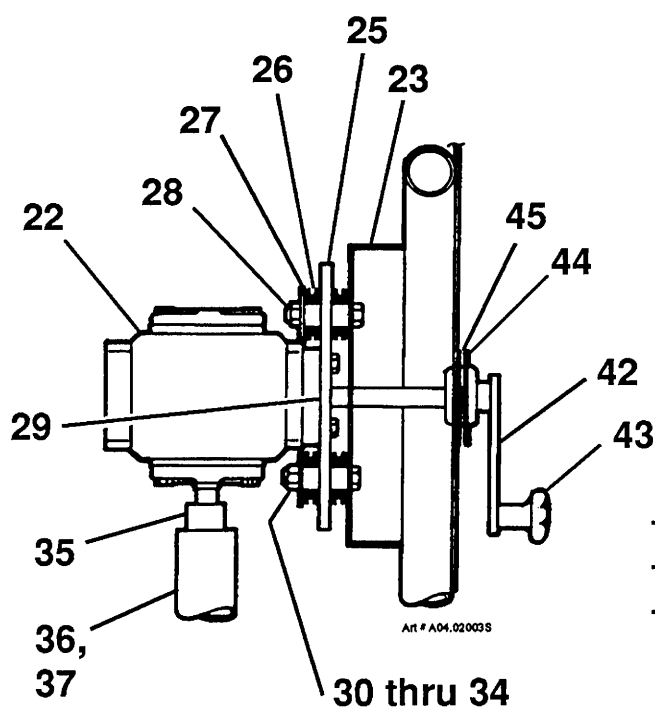
[illegible]

TITLE PLATFORM ASSEMBLY, 41/24 (SPECIAL) (PLATE 1 OF 2)

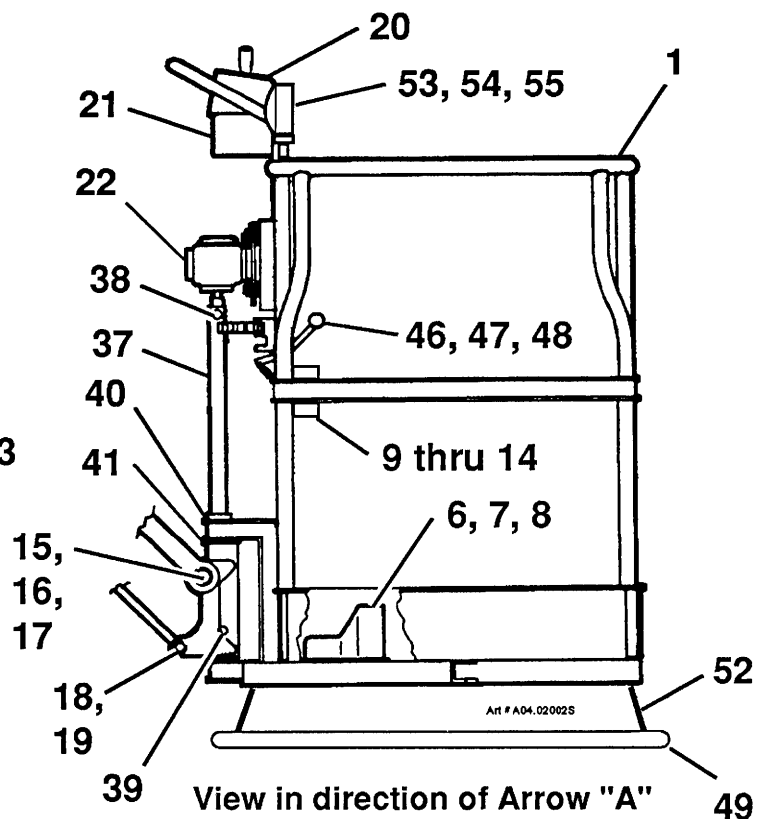
|           |       |                    |
|-----------|-------|--------------------|
| PLATE NO. | 04.17 | SIMON AERIALS INC. |
|-----------|-------|--------------------|

NEW 11/08/91

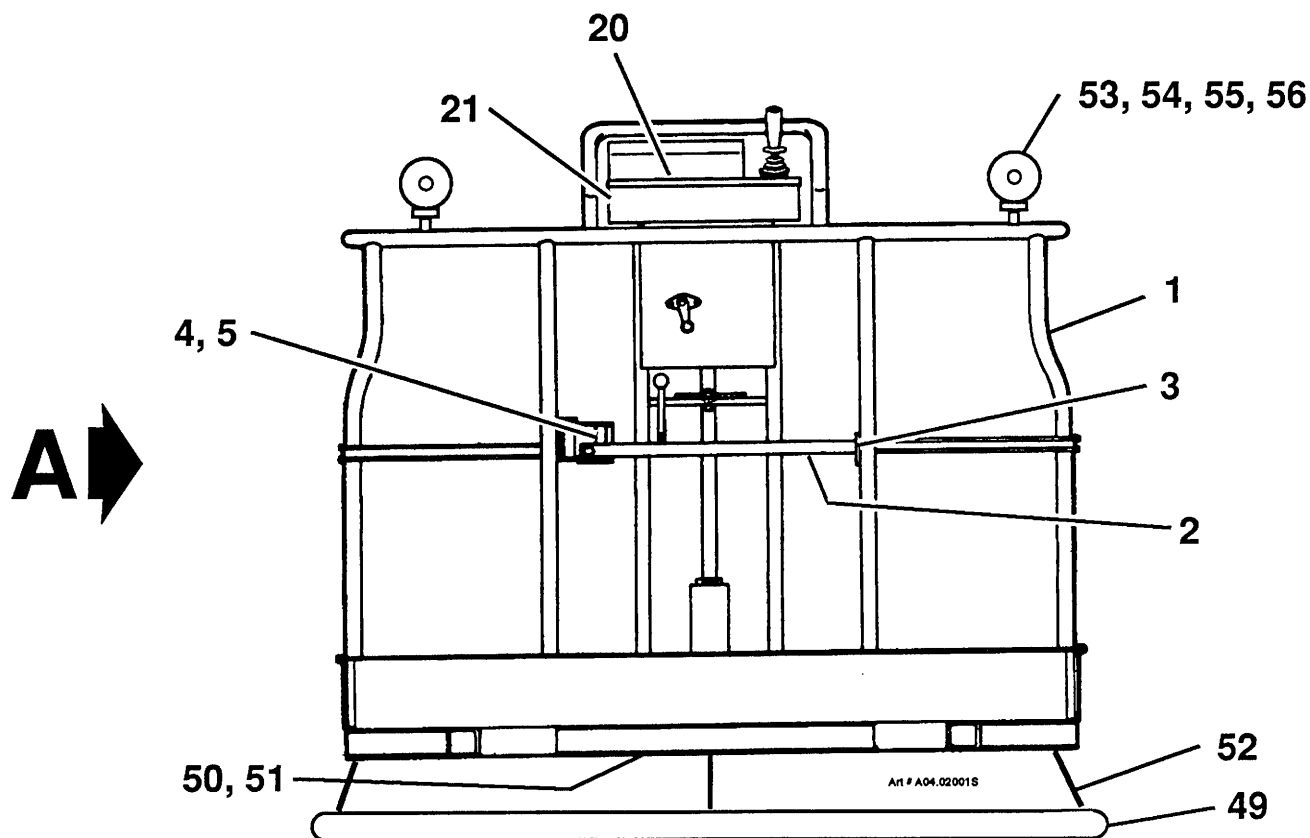
PART NO. 3513650



Enlarged view of rotator



View in direction of Arrow "A"



TITLE PLATFORM ASSEMBLY, 41/24 (SPECIAL) (PLATE 1 OF 2)

SIMON AERIALS INC.

NEW 11/08/91

PART NO.

3513650

PLATE NO.

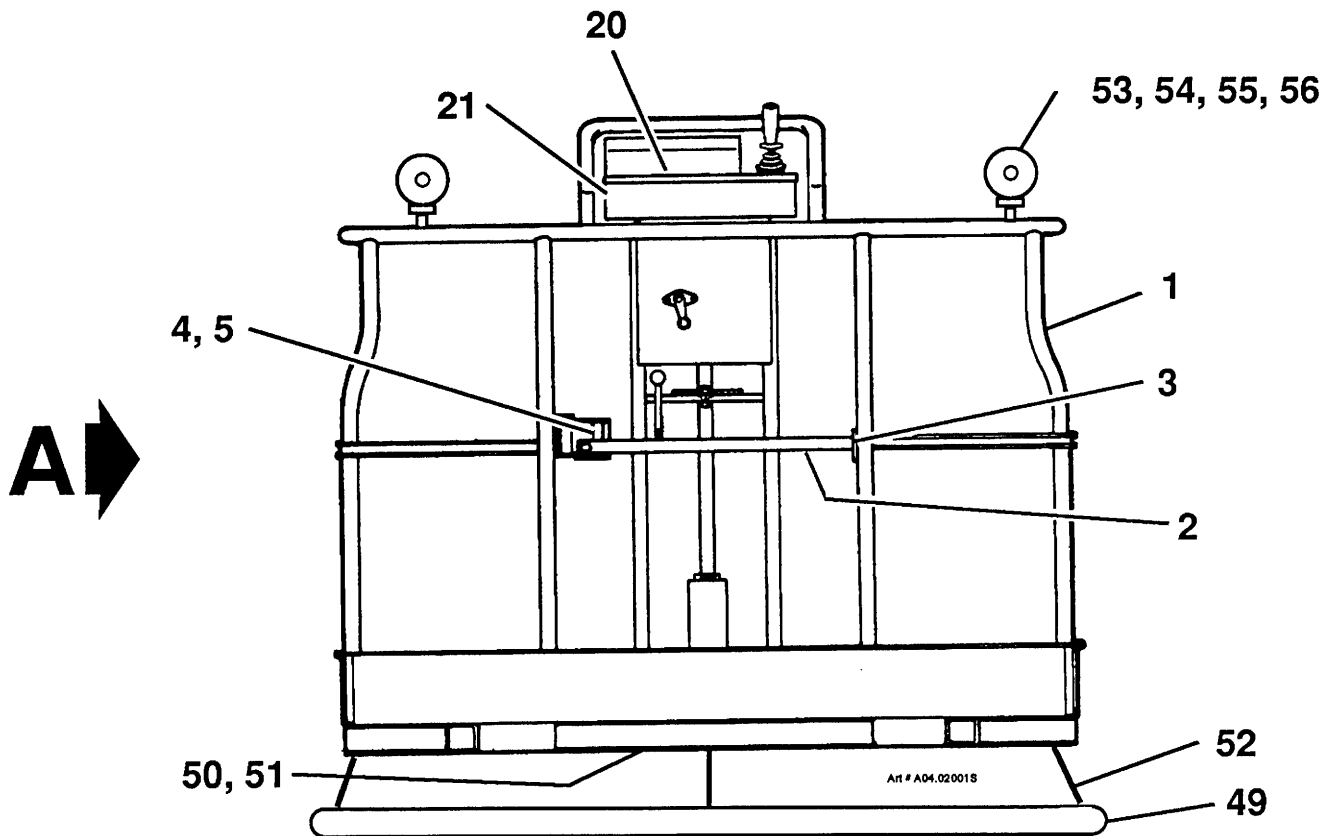
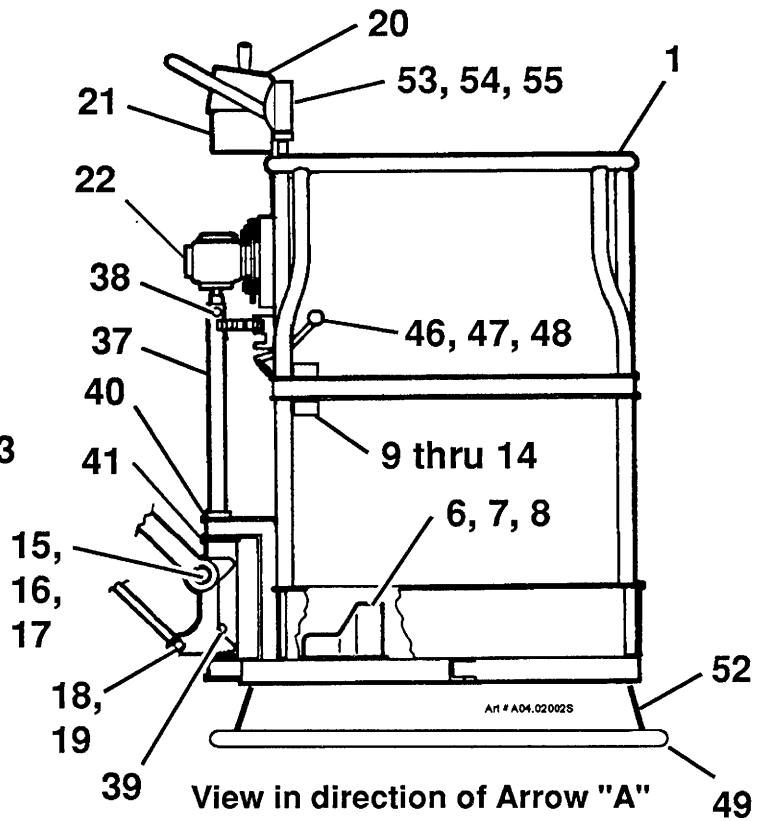
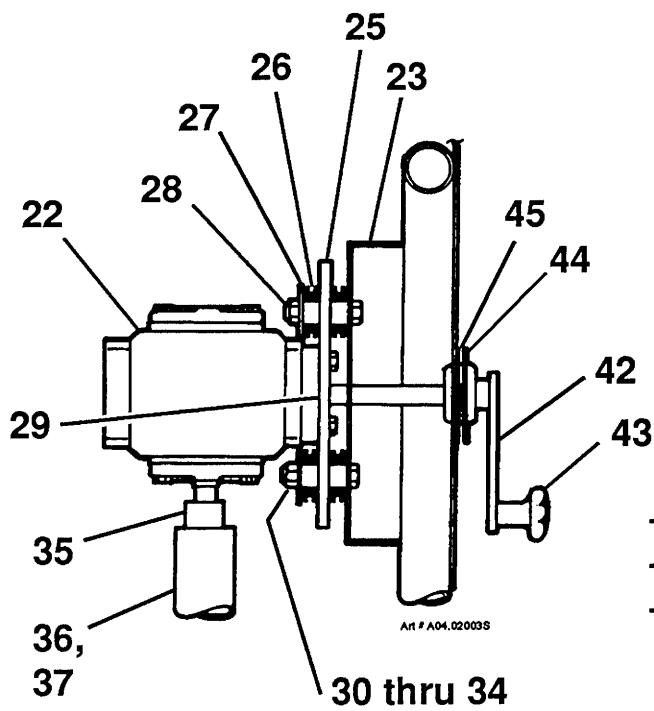
04.17

# PARTS LIST

| ITEM | PART NO   | SEE SECTION | DESCRIPTION                                       | QTY. |
|------|-----------|-------------|---|------|
| 22   | 02-012400 |             | ROTATOR, PLATFORM (Gear reducer)                  | 1    |
| 23   | 2101820   |             | BRACKET WELDMENT, ROTATOR                         | 1    |
| 24   | 2114020   |             | GEAR BOX, FLOATING                                | 1    |
| 25   | 2113990   |             | FLANGE, GEAR BOX MOUNTING                         | 1    |
| 26   | 10-084200 |             | RUBBER GROMMET                                    | 8    |
| 27   | 10-005600 |             | WASHER, FENDER (3/8")                             | 4    |
| 28   | 2114010   |             | POST, SPACER                                      | 4    |
| 29   | 2114000   |             | SPACER, GEAR                                      | 1    |
| 30   | 07-003006 |             | BOLT, HEX HEAD (1/4"-20 x 1-1/4", Grade 5)        | 4    |
| 31   | 07-003050 |             | BOLT, HEX HEAD (3/8"-16 x 2-1/4", Grade 5)        | 4    |
| 32   | 07-050016 |             | NUT, STOP (3/8"-16, Grade 5)                      | 4    |
| 33   | 07-060014 |             | WASHER, FLAT (1/4" SAE)                           | 2    |
| 34   | 07-065014 |             | WASHER, HELICAL LOCK (1/4")                       | 4    |
| 35   | 2097776   |             | COUPLING, PIVOT POST                              | 1    |
| 36   | 2101680   |             | ROD, THREADED [3/8"-16 x 12-1/2" (31.75 cm) long] | 1    |
| 37   | 2102870   |             | POST, PIVOT                                       | 1    |
| 38   | 2109830   |             | PIN, PIVOT POST UPPER                             | 1    |
| 39   | 2109840   |             | PIN, PIVOT POST LOWER                             | 2    |
| 40   | 08-014000 |             | SLEEVE BEARING                                    | 2    |
| 41   | 08-014100 |             | THRUST WASHER                                     | 1    |
| 42   | 2102900   |             | HANDLE, PLATFORM ROTATOR                          | 1    |
| 43   | 10-064900 |             | KNOB, ROTATOR HANDLE (Palm grip)                  | 1    |
| 44   | 02-012100 |             | BEARING, CAM                                      | 1    |
| 45   | 07-060014 |             | WASHER, FLAT (1 / 4" SAE)                         | 2    |
| 46   | 2101710   |             | HANDLE, PLATFORM ROTATOR LOCK                     | 1    |
| 47   | 10-042400 |             | KNOB, BALL (Plastic)                              | 1    |
| 48   | 2098060   |             | PLATE, CRANK ARM                                  | 1    |
| 49   | 2115620   |             | RING ASSEMBLY, SENSOR                             | 1    |
| 50   | 03-021400 |             | LIMIT SWITCH, SENSOR RING                         | 1    |
| 51   |           |             | LEVER ARM, LIMIT SWITCH                           | 1    |
| 52   | 10-092300 |             | CHAIN, SENSOR RING                                | 5    |
| 53   | 03-037900 |             | SPOT LIGHT (12 Volt)                              | 2    |
| 54   | 2107370   |             | BRACKET, SPOT LIGHT                               | 2    |
| 55   | 03-429600 |             | GUARD, HEADLAMP                                   | 2    |
| 56   | 10-069600 |             | CLAMP, TUBE [1-1/4" (32 mm)]                      | 2    |
| 57   | 2131200   |             | BRACKET, DE-ICER CONTROL MOUNTING                 | 1    |
| 58   | 2131240   |             | CLAMP, HOSE                                       | 2    |
|      |           |             |   |      |
|      |           |             |   |      |
|      |           |             |   |      |

TITLE PLATFORM ASSEMBLY, 41/24 (SPECIAL) (PLATE 2 OF 2)

|           |       |                    |              |                  |
|-----------|-------|--------------------|--------------|------------------|
| PLATE NO. | 04.17 | SIMON AERIALS INC. | NEW 11/08/91 | PART NO. 3513650 |
|-----------|-------|--------------------|--------------|------------------|



TITLE PLATFORM ASSEMBLY, 41/24 (SPECIAL) (PLATE 2 OF 2)

SIMON AERIALS INC.

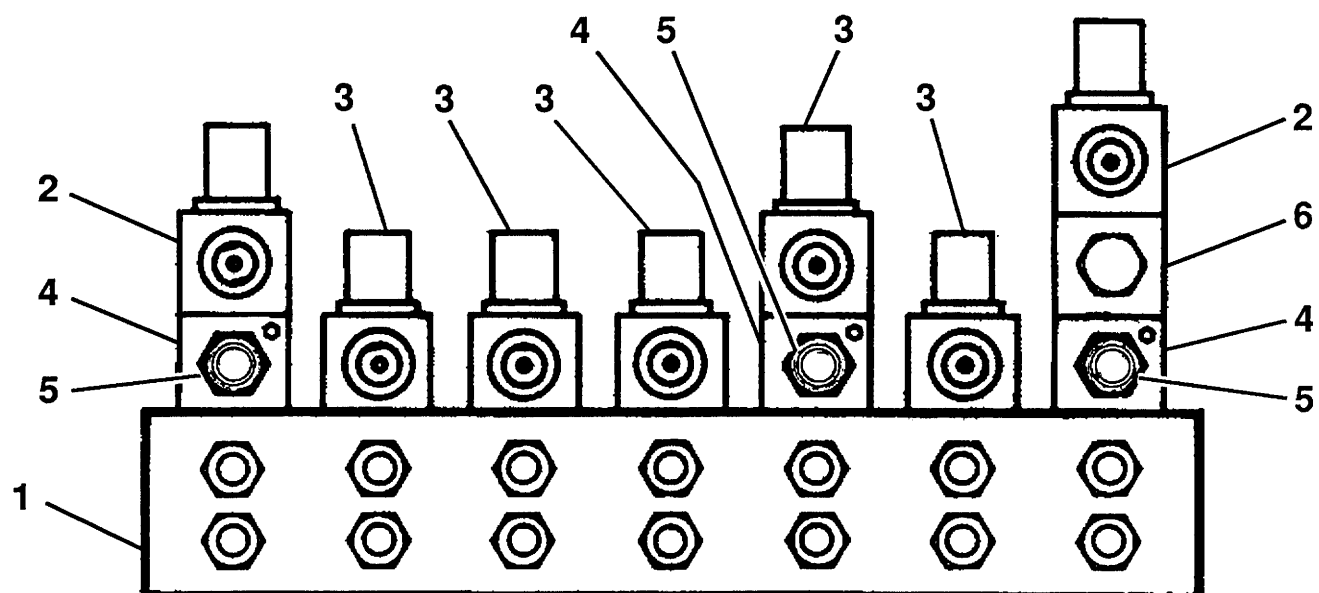
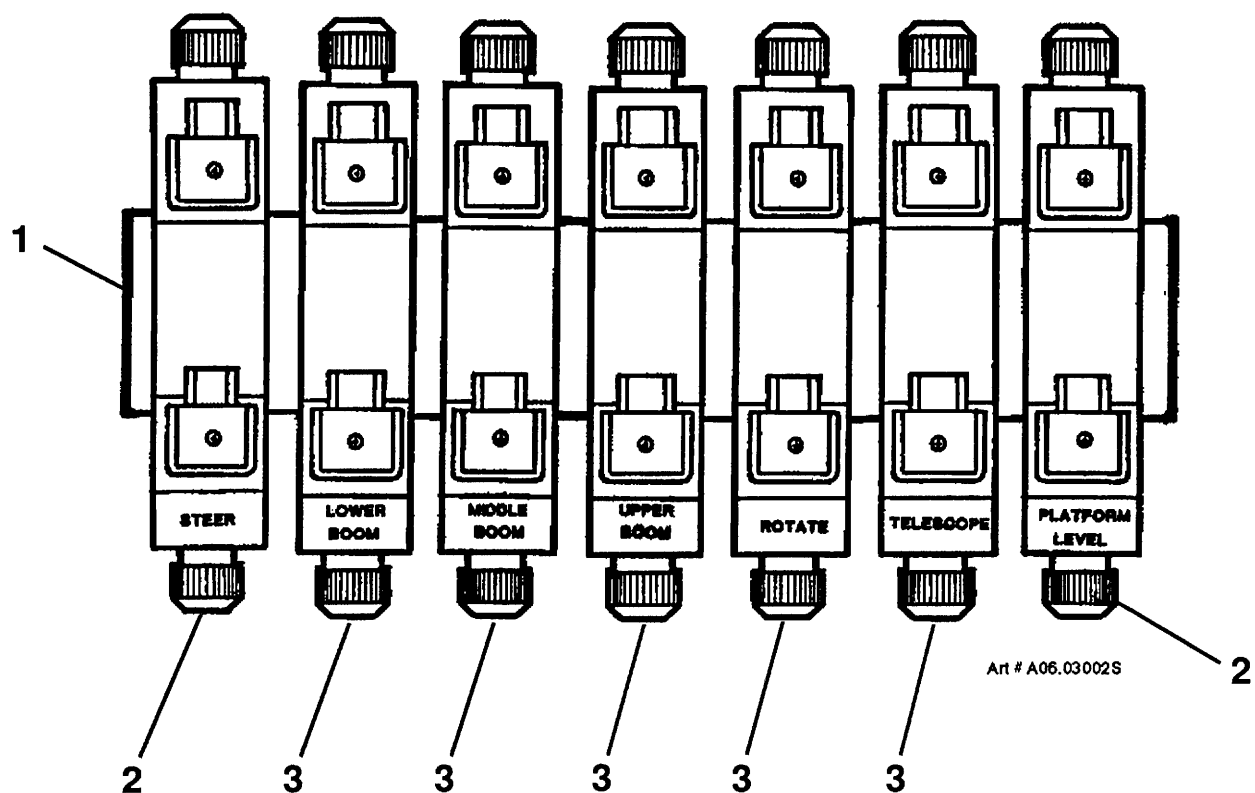
NEW 11/08/91

PART  
NO.

3513650

PLATE  
NO.

04.17



TITLE

VALVE BANK ASSEMBLY

SIMON AERIALS INC.

NEW 11/13/91

PART  
NO.

PLATE  
NO.

06.18



[illegible]

## VALVE BANK ASSEMBLY

06.18

# SIMON AERIALS INC.

NEW 11/13/91

PART  
NO.

## PARTS LIST

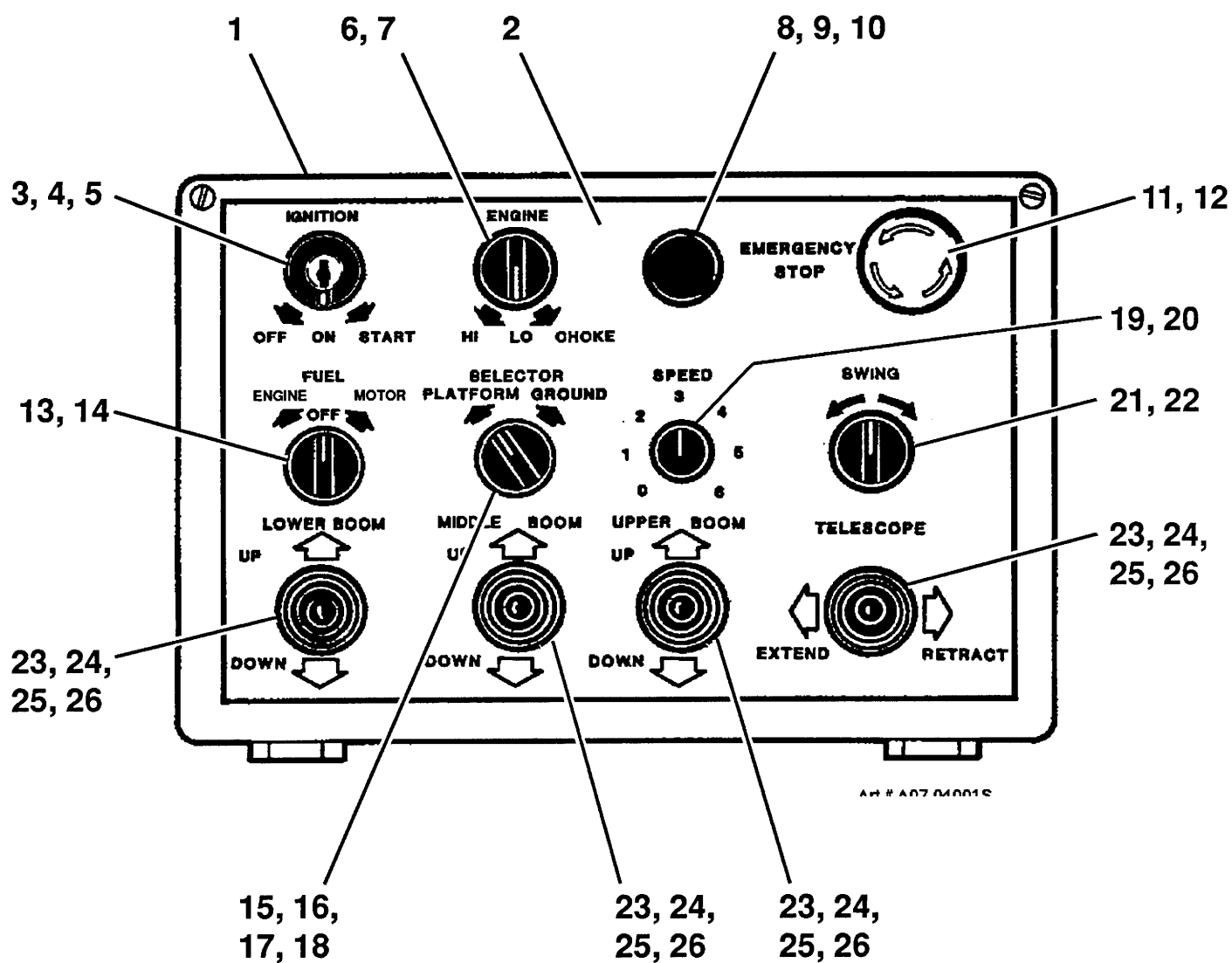
| ITEM | PART NO   | SEE<br>SECTION | DESCRIPTION  | QTY. |
|------|-----------|----------------|--|------|
| 1    | 10-082700 |                | ENCLOSURE, GROUND CONTROL  | 1    |
| 2    |           |                | DECAL, GROUND CONTROL  | 1    |
| 3    | 03-423100 |                | SWITCH, KEY OPERATED   | 1    |
| 4    | 03-407600 |                | BASE AND CONTACT BLOCK ASSEMBLY<br>(includes base and 2 normally open contact blocks)                                  | 1    |
| 5    | 03-409500 |                | BLOCK, CONTACT (normally closed)   | 1    |
| 6    | 03-411700 |                | SWITCH, 3 POSITION ROTARY (Engine RPM)   | 1    |
| 7    | 03-407600 |                | BASE AND CONTACT BLOCK ASSEMBLY<br>(includes base and 2 normally open contact blocks)                                  | 1    |
| 8    | 03-409400 |                | BASE, PILOT LIGHT (7 contact)  | 1    |
| 9    | 03-410300 |                | LENS, PILOT LIGHT (Blue)   | 1    |
| 10   | 03-409401 |                | BULB, PILOT LIGHT  | 1    |
| 11   | 03-409800 |                | BUTTON, EMERGENCY STOP   | 1    |
| 12   | 03-410100 |                | BASE AND CONTACT BLOCK ASSY (Emergency stop)<br>(includes base, 1 normally open and 1 normally closed contact block)   | 1    |
| 13   | 03-423000 |                | SWITCH, 3 POSITION ROTARY (Engine/ Motor selector)   | 1    |
| 14   | 03-410100 |                | BASE AND CONTACT BLOCK ASSY (Engine/ Motor)<br>(includes base, 1 normally open and 1 normally closed contact block)    | 1    |
| 15   | 03-410000 |                | SWITCH, 2 POSITION ROTARY (Platform/ Ground)   | 1    |
| 16   | 03-410100 |                | BASE AND CONTACT BLOCK ASSY (Platform/ Ground)<br>(includes base, 1 normally open and 1 normally closed contact block) | 1    |
| 17   | 03-409500 |                | BLOCK, CONTACT (normally closed)   | 1    |
| 18   | 03-409600 |                | BLOCK, CONTACT (normally open)   | 1    |
| 19   | 03-411100 |                | POTENTIOMETER (Function speed) (100 Ohm)   | 1    |
| 20   | 10-084000 |                | KNOB, POTENTIOMETER (Function speed)   | 1    |
| 21   | 03-407500 |                | SWITCH, 3 POSITION ROTARY (Swing)  | 1    |
| 22   | 03-407600 |                | BASE AND CONTACT BLOCK ASSEMBLY<br>(includes base and 2 normally open contact blocks)                                  | 1    |
| 23   | 03-409700 |                | CONTROL, JOYSTICK  | 4    |
| 24   | 03-409701 |                | TIP, RUBBER  | 1    |
| 25   | 03-409702 |                | HANDLE, JOYSTICK   | 1    |
| 26   | 03-409703 |                | BOOT, JOYSTICK   | 1    |
|      |           |                |  |      |
|      |           |                |  |      |

**TITLE** GROUND CONTROL BOX ASSEMBLY (SPECIAL) (PLATE 1 OF 2)

**PLATE NO.** 07.18 **SIMON AERIALS INC.**

NEW 11/20/91

**PART NO.**



TITLE GROUND CONTROL BOX ASSEMBLY (SPECIAL) (PLATE 1 OF 2)

**SIMON AERIALS INC.**

NEW 11/20/91

PART  
NO.

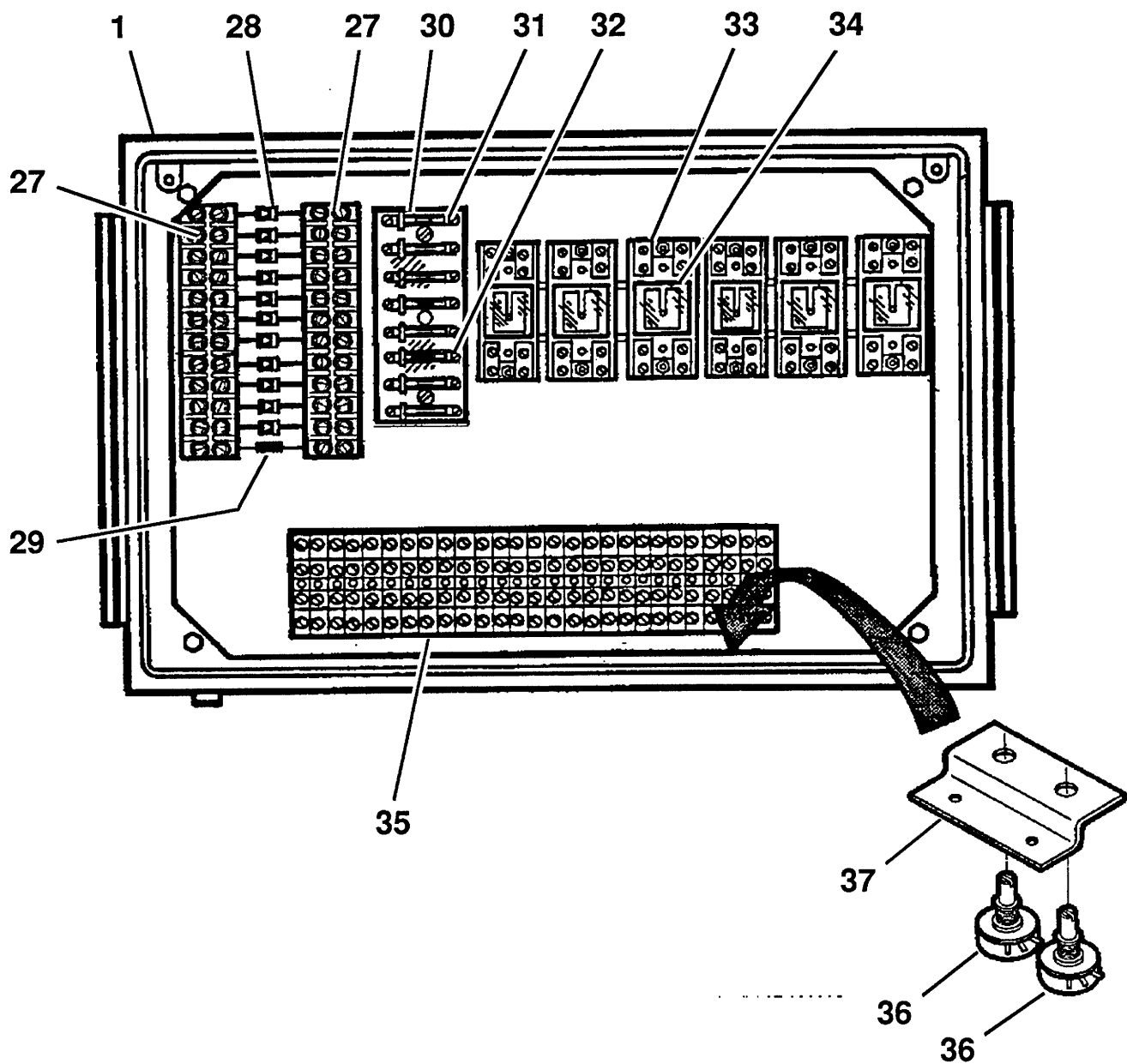
PLATE  
NO.

07.18

[illegible]

|           |       |                           |
|-----------|-------|---------------------------|
| PLATE NO. | 07.18 | <b>SIMON AERIALS INC.</b> |
|-----------|-------|---------------------------|

PART  
NO.



TITLE GROUND CONTROL BOX ASSEMBLY (SPECIAL) (PLATE 2 OF 2)

**SIMON AERIALS INC.**

NEW 11/20/91

PART  
NO.

PLATE  
NO.

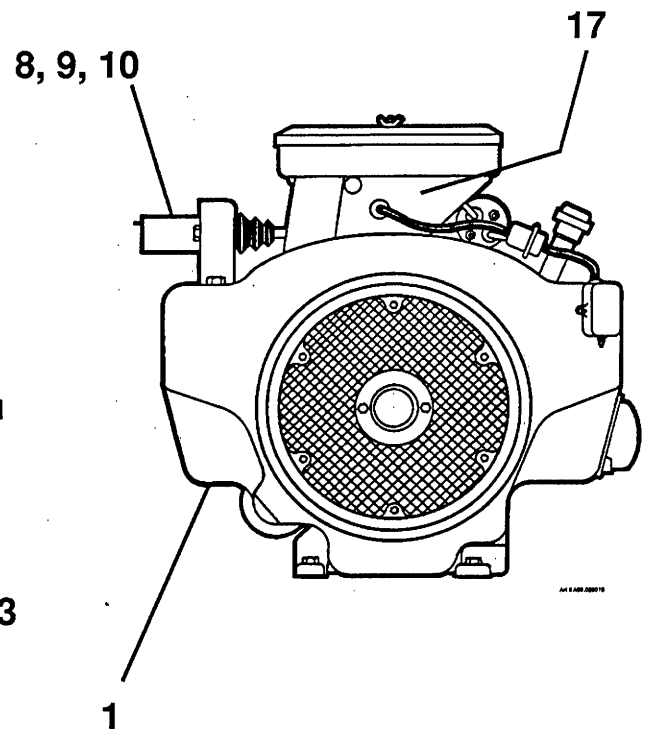
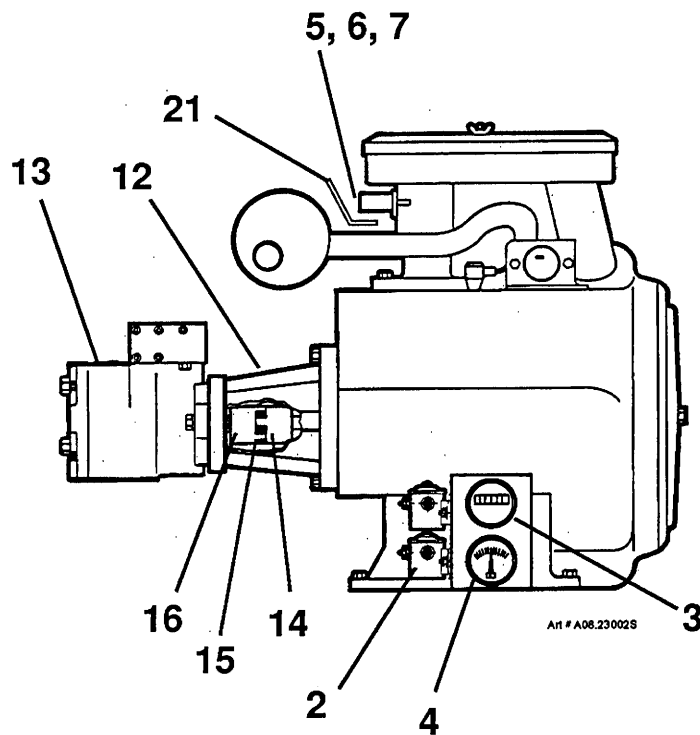
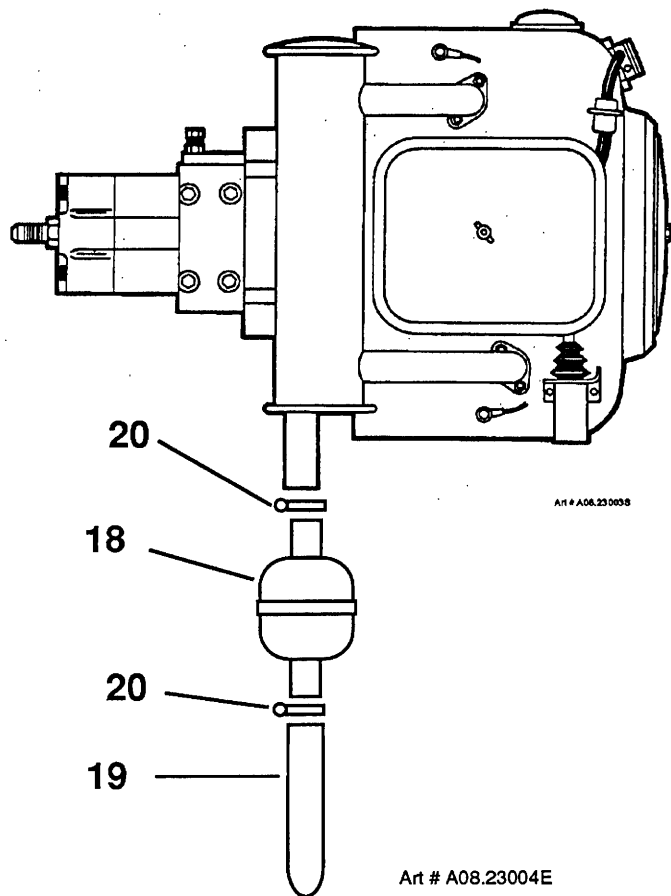
07.18



[illegible]

# ENGINE ASSEMBLY, ONAN 24 H.P., GAS

PART  
NO.



TITLE

ENGINE ASSEMBLY, ONAN 24 H.P. GAS

**SIMON AERIALS INC.**

NEW 11/07/91

PART  
NO.

PLATE  
NO.

08.23

## PARTS LIST

| ITEM | PART NO   | SEE SECTION | DESCRIPTION   | QTY. |
|------|-----------|-------------|---|------|
| 1    | 10-086100 |             | ENCLOSURE, PLATFORM CONTROL   | 1    |
| 2    | 10-086000 |             | COVER, PLATFORM CONTROL   | 1    |
| 3    | 10-091900 |             | DECAL, PLATFORM CONTROL   | 1    |
| 4    | 03-409700 |             | CONTROL, JOYSTICK   | 4    |
| 5    | 03-409701 |             | TIP, RUBBER   | 1    |
| 6    | 03-409702 |             | HANDLE, JOYSTICK  | 1    |
| 7    | 03-409703 |             | BOOT, JOYSTICK  | 1    |
| 8    | 03-411700 |             | SWITCH, 3 POSITION ROTARY (Ignition and Engine speed)                                     | 2    |
| 9    | 03-407600 |             | BASE AND CONTACT BLOCK ASSEMBLY<br>(includes base and two normally open contact blocks)   | 4    |
| 10   | 03-409500 |             | BLOCK, CONTACT (normally closed)  | 1    |
| 11   | 03-409800 |             | SWITCH, PUSH BUTTON (Emergency stop)  | 1    |
| 12   | 03-454900 |             | BASE, SWITCH MOUNTING   | 1    |
| 13   | 03-437300 |             | BLOCK, CONTACT (Normally closed)  | 1    |
| 14   | 03-409400 |             | BASE, PILOT LIGHT (7 contact) (12 Volt)   | 1    |
| 15   | 03-409401 |             | BULB, PILOT LIGHT (12 Volt)   | 1    |
| 16   | 03-410300 |             | LENS, PILOT LIGHT (Blue)  | 1    |
| 17   | 03-407500 |             | SWITCH, SELECTOR (3 position) (Level and Swing)   | 2    |
| 18   | 03-411100 |             | POTENTIOMETER (100 Ohm) (Function speed)  | 1    |
| 19   | 10-088300 |             | KNOB, POTENTIOMETER (Function speed)  | 1    |
| 20   | 03-410000 |             | SWITCH, 2 POSITION ROTARY (2 maintained contact)<br>(Lift/ Drive selector)                | 1    |
| 21   | 03-454900 |             | BASE, SWITCH MOUNTING   | 1    |
| 22   | 03-437300 |             | BLOCK, CONTACT (Normally closed)  | 1    |
| 23   | • 3515850 | 29.03       | CONTROLLER, DRIVE   | 1    |
| 24   | 2126370   |             | PLATE, DRIVE CONTROLLER MOUNTING  | 1    |
| 25   | 03-410000 |             | SWITCH, 2 POSITION ROTARY (2 maintained contact)<br>(Drive speed, running and work lamps) | 3    |
| 26   | 03-454900 |             | BASE, SWITCH MOUNTING   | 3    |
| 27   | 03-437300 |             | BLOCK, CONTACT (Normally closed)  | 3    |
| 28   | 03-421900 |             | PUSH BUTTON (Blue, booted head,<br>replaces green color originally provided)              | 1    |
| 29   | 03-031200 |             | LAMP, CONTROL PANEL   | 2    |
| 30   | 03-412300 |             | STRIP, TERMINAL (12 pole, 20 Amp)   | A.R. |
| 31   | 03-061800 |             | DIODE (600 Volt)  | 9    |
| 32   | 03-433000 |             | RESISTOR (60 Ohm)   | 1    |
| 33   | 10-083300 |             | CLAMP, CABLE  | 6    |

TITLE PLATFORM CONTROL CONSOLE ASSEMBLY (SPECIAL)

PLATE NO.

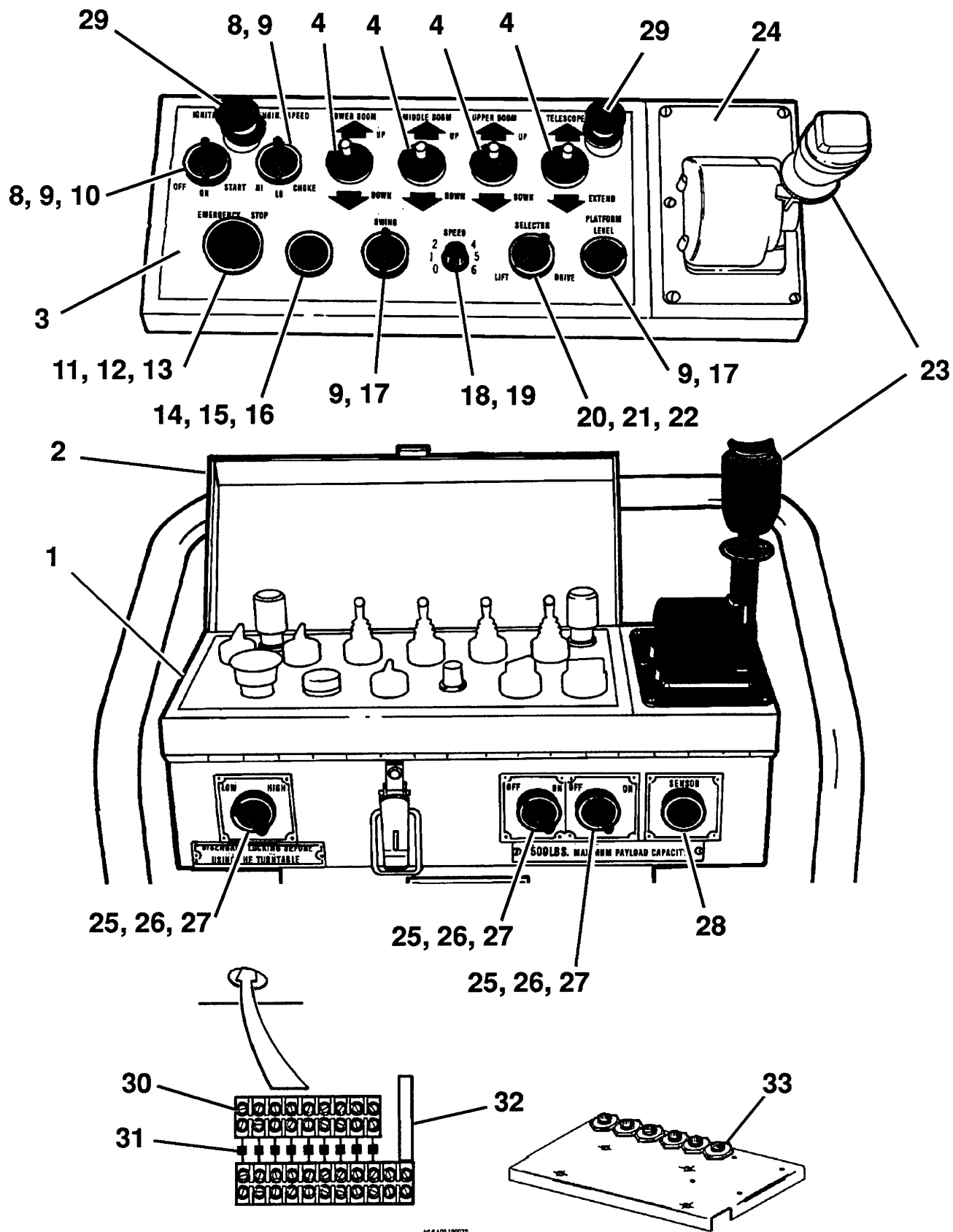
09.19

**SIMON AERIALS INC.**

REV. 11 AUG., 1993

PART NO.





TITLE PLATFORM CONTROL CONSOLE ASSEMBLY (SPECIAL)

SIMON AERIALS INC.

REV. 11 AUG., 1993

PART NO.

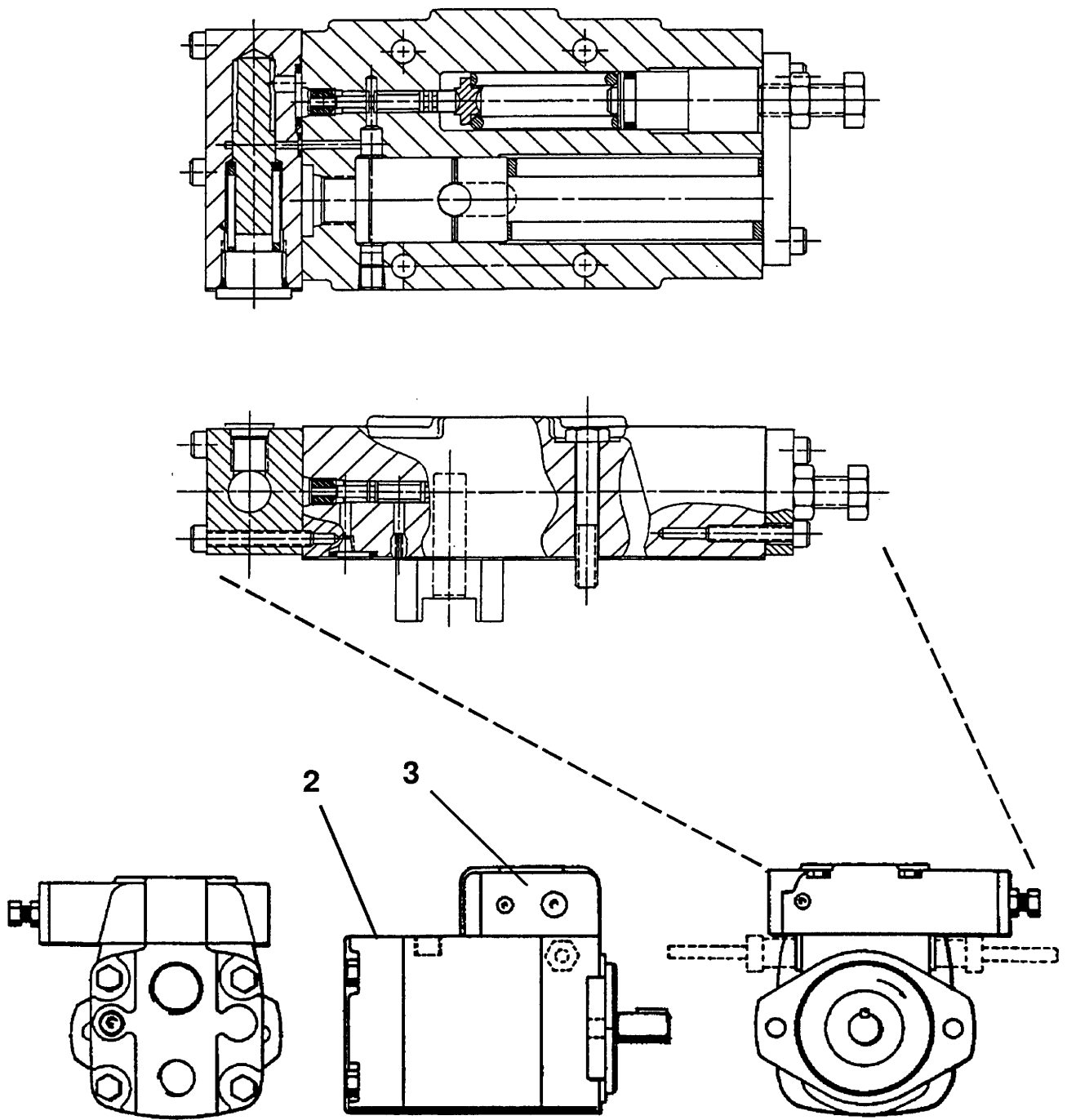
PLATE NO.

09.19

[illegible]

## PUMP ASSEMBLY

01-083900



TITLE

PUMP ASSEMBLY

**SIMON AERIALS INC.**

NEW 08/01/91

PART  
NO.

01-083900

PLATE  
NO.

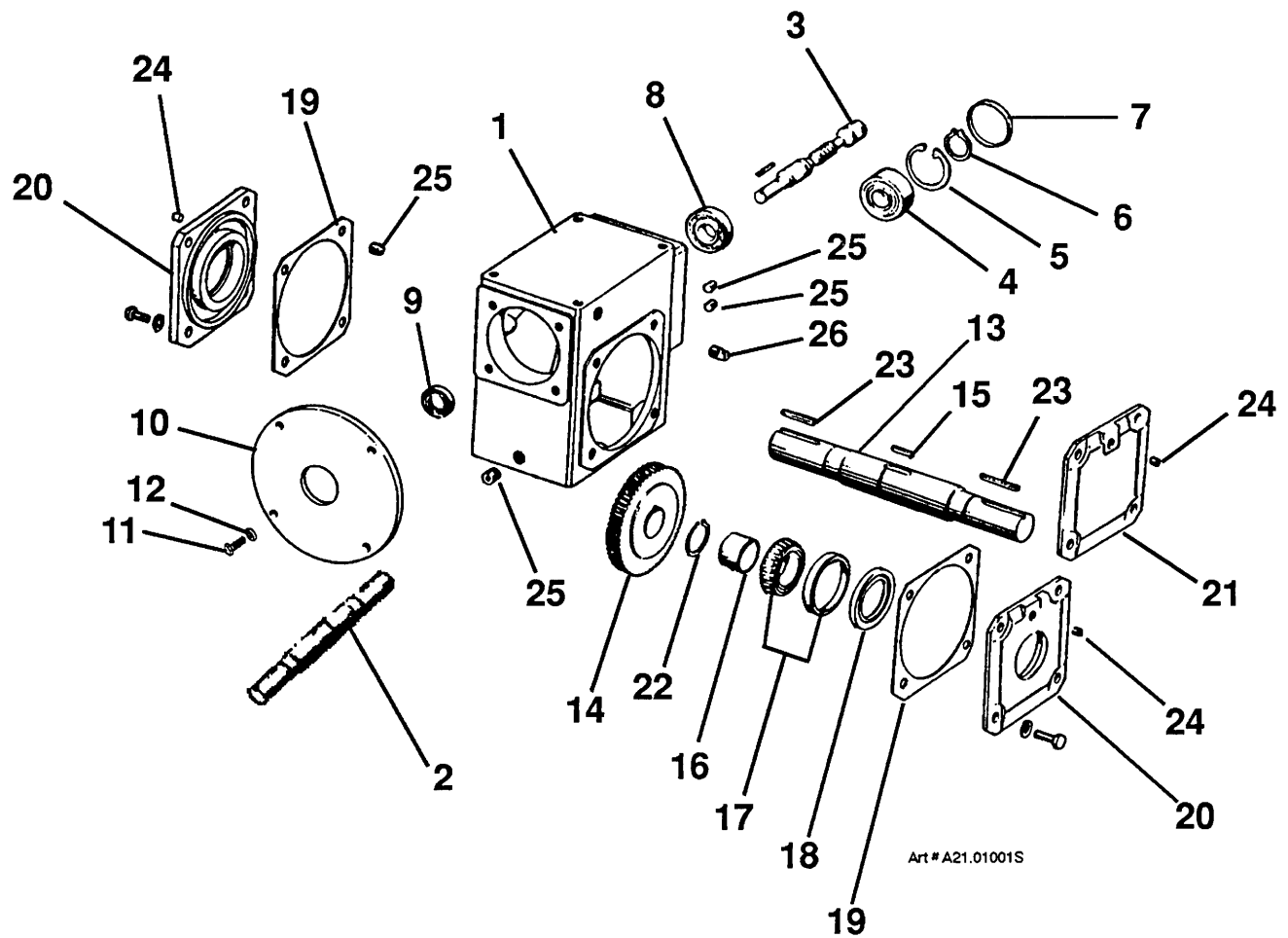
12.09

[illegible]

|           |       |  |               |
|-----------|-------|--|---------------|
| TITLE     |       | PLATFORM ROTATOR (40:1 WORM SPEED REDUCER) |               |
| PLATE NO. | 21.01 | SIMON AERIALS INC.                         | REV. 11/20/91 |
|           |       | PART NO.                                   | 02-012400     |

REV. 11/20/91

PART  
NO.



TITLE PLATFORM ROTATOR (40:1 WORM SPEED REDUCER)

**SIMON AERIALS INC.**

REV. 11/20/91

PART  
NO.

02-012400

PLATE  
NO.

21.01

## PARTS LIST

| ITEM | PART NO   | SEE<br>SECTION | DESCRIPTION  | QTY. |
|------|-----------|----------------|--|------|
| 1    | 3514580   |                | VALVE ASSEMBLY, UNDERCARRIAGE                        | 1    |
| 2    | 01-069300 |                | VALVE, DIRECTIONAL CONTROL (12 Volt)                 | 1    |
| 3    | 01-073300 |                | SUBPLATE, VALVE                                      | 1    |
| 4    | 06-001300 |                | CONNECTOR, MALE (8-8 FTX)                            | 1    |
| 5    | 06-001700 |                | CONNECTOR, MALE (12-8 FTX)                           | 2    |
| 6    | 06-005000 |                | ELBOW, MALE (12-8 CTX)                               | 1    |
| 7    | 01-012400 |                | VALVE, MOTION CONTROL                                | 1    |
| 8    | 01-012401 |                | SEAL KIT, MOTION CONTROL VALVE                       | 1    |
| 9    | 06-045500 |                | ELBOW, STRAIGHT THREAD (12-10 C50X)                  | 3    |
| 10   | 06-051800 |                | ELBOW, SWIVEL NUT (12 C6X)                           | 1    |
| 11   | 06-040800 |                | CONNECTOR, STRAIGHT THREAD (12 F50X)                 | 1    |
| 12   | 01-084200 |                | VALVE, SERIES/ PARALLEL                              | 1    |
| 13   | 06-041000 |                | CONNECTOR, STRAIGHT THREAD (12-10 F50X)              | 1    |
| 14   | 06-040300 |                | CONNECTOR, STRAIGHT THREAD (8-10 F50X)               | 1    |
| 15   | 06-039300 |                | CONNECTOR, STRAIGHT THREAD (4 F50X)                  | 1    |
| 16   | 06-040700 |                | CONNECTOR, STRAIGHT THREAD (10 F50X)                 | 1    |
| 17   | 06-045500 |                | ELBOW, STRAIGHT THREAD (12-10 C50X)                  | 1    |
| 18   | 06-045200 |                | ELBOW, STRAIGHT THREAD (10 C50X)                     | 2    |
| 19   | 06-039800 |                | CONNECTOR, STRAIGHT THREAD (6 F50X)                  | 1    |
| 20   | 06-051500 |                | ELBOW, SWIVEL NUT (6 C6X)                            | 1    |
| 21   | 01-037100 |                | VALVE, 3 WAY SOLENOID                                | 1    |
| 22   | 01-037198 |                | COIL, SOLENOID VALVE (12 Volt)                       | 1    |
| 23   | 06-000700 |                | CONNECTOR, MALE (6 FTX)                              | 1    |
| 24   | 06-197500 |                | FITTING (JIC Female swivel) (4-4 F6X)                | 1    |
| 25   | 06-000400 |                | CONNECTOR, MALE (4-4 FTX)                            | 1    |
| 26   | 2131560   |                | MANIFOLD, VALVE                                      | 1    |
| 27   | 06-001300 |                | CONNECTOR, MALE (8-8 FTX)                            | 1    |
| 28   | 06-000400 |                | CONNECTOR, MALE (4-4 FTX)                            | 1    |
| 29   | 06-003500 |                | ELBOW, MALE (4-4 CTX)                                | 1    |
| 30   | 06-197700 |                | FITTING, JIC FEMALE SWIVEL (6 F6X)                   | 1    |
| 31   | 06-003800 |                | ELBOW, MALE (6 CTX)                                  | 1    |
| 32   | 01-018900 |                | VALVE, FLOW CONTROL (Restrictor valve)               | 1    |
| 33   | 06-050000 |                | BRANCH TEE, STRAIGHT THREAD (6 S50X)                 | 1    |
| 34   | 06-048500 |                | RUN TEE, STRAIGHT THREAD (6 R50X)                    | 1    |
| 35   | 06-051500 |                | ELBOW, SWIVEL NUT (6 C6X)                            | 1    |
| 36   | 2131390   |                | TUBE ASSEMBLY [Straight, 2-1/4" (57 mm) long]        | 1    |
| 37   | 2131400   |                | TUBE ASSEMBLY [Straight, 2-3/4" (70 mm) long]        | 1    |
| 38   | 2131410   |                | TUBE ASSEMBLY [Ell, 3-7/16" x 2-13/16" (87 x 71 mm)] | 1    |
| 39   | 2131420   |                | TUBE ASSEMBLY [Ell, 7" x 3-3/8" (178 x 86 mm) long]  | 1    |

TITLE

VALVE ASSEMBLY, 41/24 (SPECIAL)

PLATE  
NO.

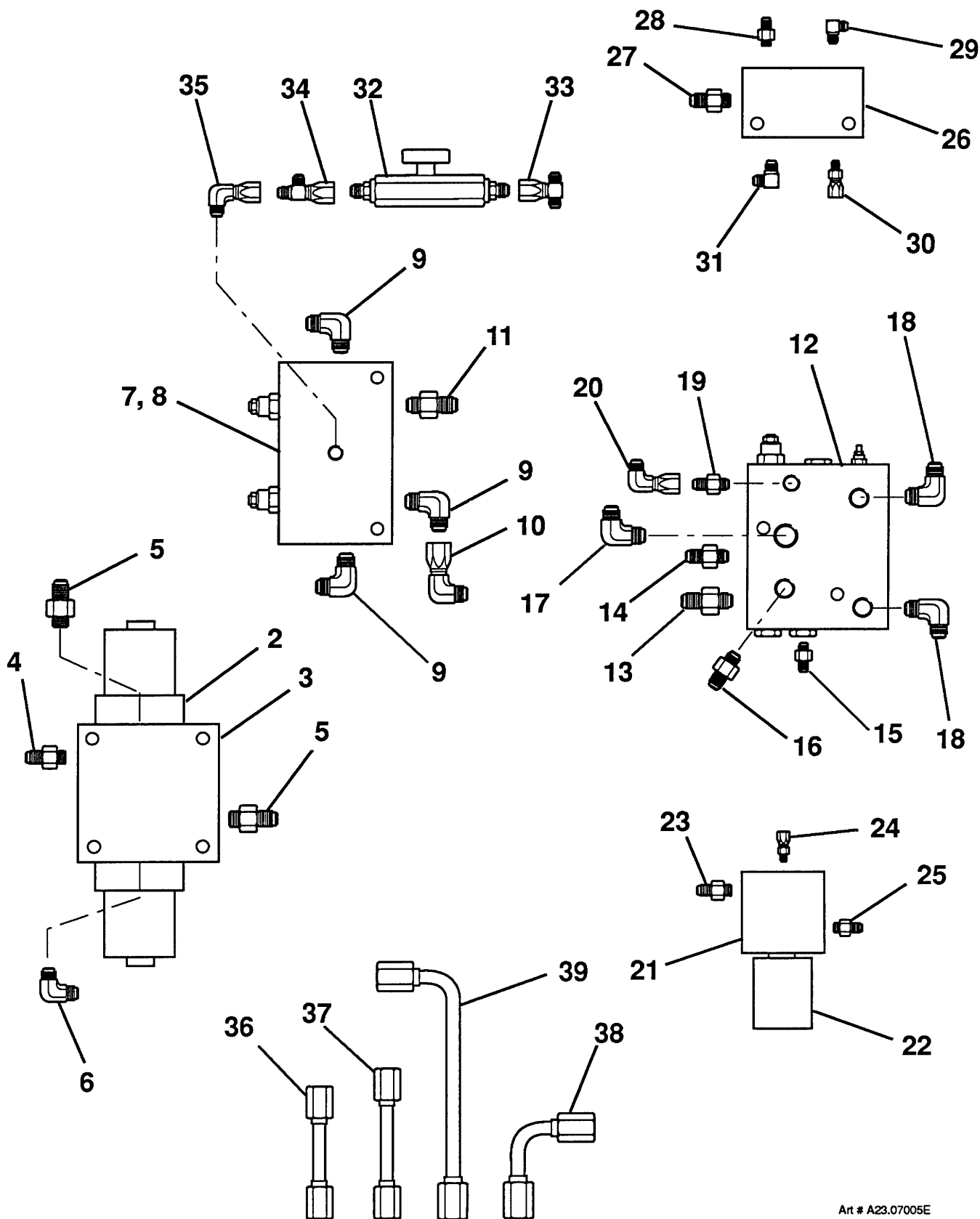
23.07

**SIMON AERIALS INC.**

NEW 11/14/91

PART  
NO.

3514580



Art # A23.07005E

TITLE

VALVE ASSEMBLY, 41/24 (SPECIAL)

**SIMON AERIALS INC.**

NEW 11/14/91

PART  
NO.

3514580

PLATE  
NO.

23.07

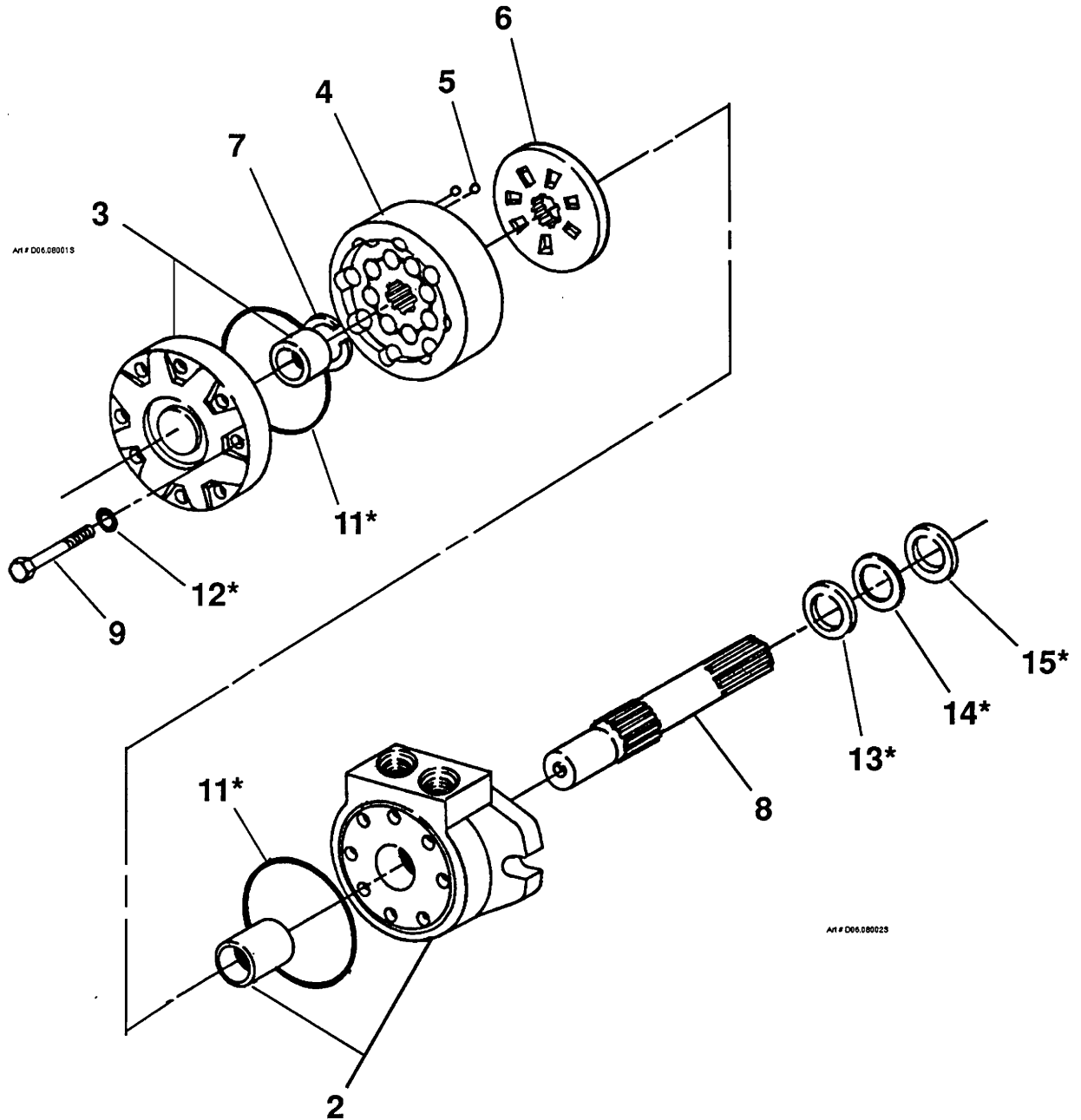


[illegible]

|           |   |                    |                    |
|-----------|---|--------------------|--------------------|
| TITLE     | WHEEL MOTOR/ BRAKE, SPECIAL 41/24 (MOTOR, PLATE 1 OF 2) |                    |                    |
| PLATE NO. | 26.05   | SIMON AERIALS INC. | REV. 19 AUG., 1993 |
| PART NO.  | 01-016700   |                    |                    |

REV. 19 AUG., 1993

**PART NO.** 01-016700



TITLE WHEEL MOTOR/ BRAKE, SPECIAL 41/24 (MOTOR, PLATE 1 OF 2)

**SIMON AERIALS INC.**

REV. 19 AUG., 1993

PART NO. 01-016700

PLATE NO. 26.05

## PARTS LIST

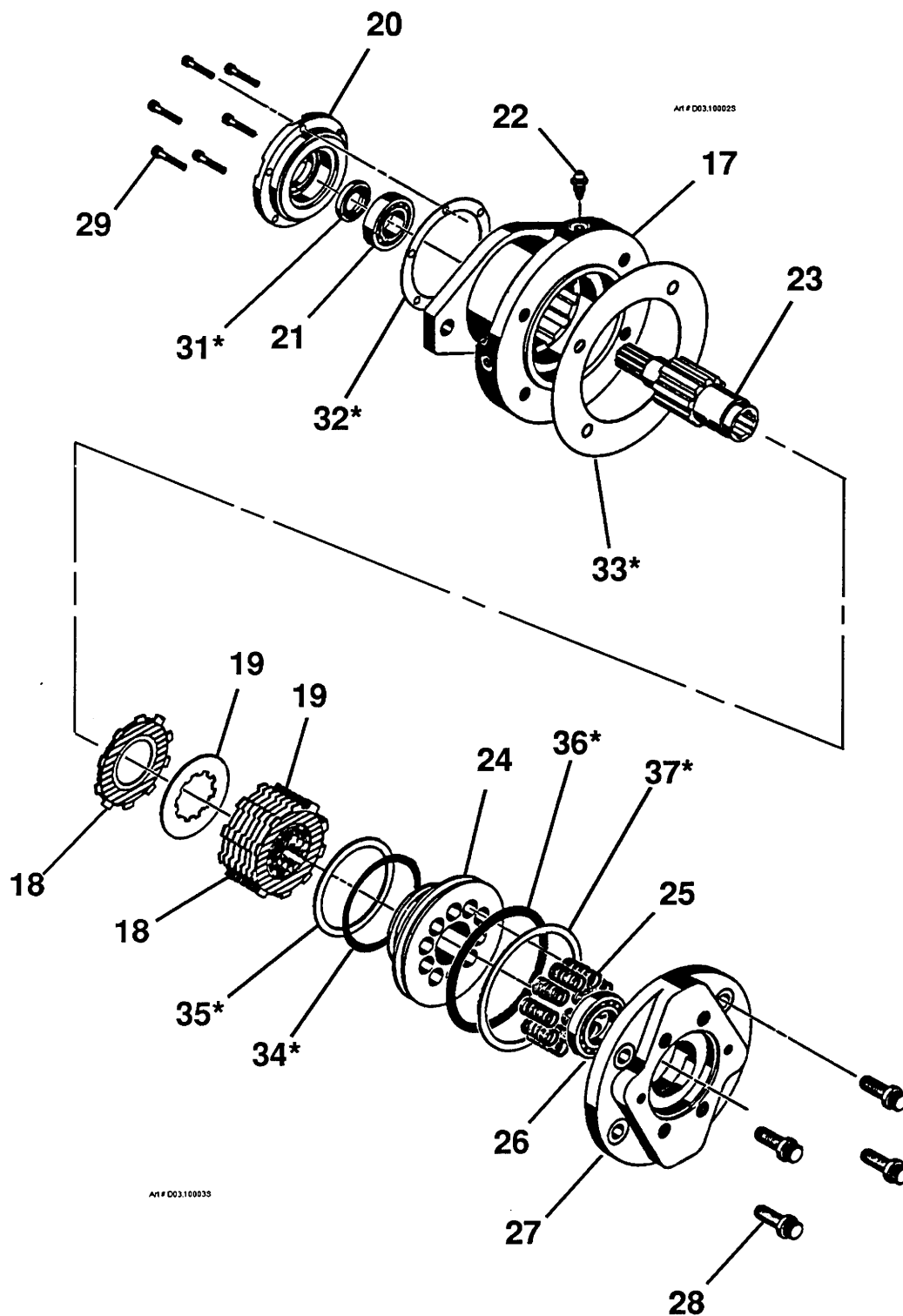
[illegible]

TITLE WHEEL MOTOR/ BRAKE, SPECIAL 41/24 (BRAKE, PLATE 2 OF 2)

|           |       |                           |
|-----------|-------|---------------------------|
| PLATE NO. | 26.05 | <b>SIMON AERIALS INC.</b> |
|-----------|-------|---------------------------|

REV. 19 AUG., 1993

**PART NO.** 01-018500



TITLE WHEEL MOTOR/ BRAKE, SPECIAL 41/24 (BRAKE, PLATE 2 OF 2)

**SIMON AERIALS INC.**

REV. 19 AUG., 1993

PART NO. 01-018500

PLATE NO. 26.05

# PARTS LIST

| ITEM | PART NO   | SEE<br>SECTION | DESCRIPTION                              | QTY. |
|------|-----------|----------------|--|------|
| 1    | 02-021200 |                | WHEEL DRIVE ASSEMBLY, PLANETARY (19.1:1) | 1    |
| 2    |           |                | SPINDLE                                  | 1    |
| 3    |           |                | RING, RETAINING                          | 1    |
| 4    |           |                | BEARING                                  | 2    |
| 5    |           |                | LOCK NUT, BEARING RETAINER               | 1    |
| 6    |           |                | WASHER                                   | 1    |
| 7    |           |                | HUB, OUTPUT                              | 1    |
| 8    |           |                | STUD, WHEEL                              | 9    |
| 9    |           |                | GEAR, RING (First and second stage)      | 1    |
| 10   |           |                | PLANETARY REDUCTION                      | 1    |
| 11   |           |                | CARRIER, FIRST STAGE                     | 1    |
| 12   |           |                | GEAR, PLANET                             | 3    |
| 13   |           |                | BEARING, NEEDLE                          | 84   |
| 14   |           |                | PIN, PLANET GEAR                         | 3    |
| 15   |           |                | WASHER, THRUST                           | 6    |
| 16   |           |                | RING, RETAINING                          | 3    |
| 17   |           |                | SUN GEAR, FIRST STAGE                    | 1    |
| 18   |           |                | RING, RETAINING                          | 1    |
| 19   |           |                | CARRIER, SECOND STAGE                    | 1    |
| 20   |           |                | GEAR, PLANET                             | 3    |
| 21   |           |                | BEARING, NEEDLE                          | 138  |
| 22   |           |                | SPACER                                   | 3    |
| 23   |           |                | PIN, PLANET GEAR                         | 3    |
| 24   |           |                | WASHER, THRUST                           | 6    |
| 25   |           |                | ROLL PIN                                 | 3    |
| 26   |           |                | SUN GEAR, SECOND STAGE (Central pinion)  | 1    |
| 27   |           |                | RING, RETAINING                          | 2    |
| 28   |           |                | COUPLING                                 | 1    |
| 29   |           |                | SHAFT, INPUT                             | 1    |
| 30   |           |                | BEARING, INPUT                           | 1    |
| 31   |           |                | RING, RETAINING                          | 1    |
| 32   |           |                | RING, RETAINING                          | 1    |
| 33   |           |                | SPRING                                   | 1    |
| 34   |           |                | COVER, DISCONNECT                        | 1    |
| 35   |           |                | PIN, DISCONNECT                          | 1    |
| 36   |           |                | CAP, DISCONNECT                          | 1    |
| 37   |           |                | SEAL KIT, HUB                            | 1    |
| 38   |           |                | SEAL, HUB TO SPINDLE                     | 1    |
| 39   |           |                | "O"-RING                                 | 1    |
| 40   |           |                | "O"-RING                                 | 1    |
| 41   |           |                | "O"-RING                                 | 1    |
| 42   |           |                | "O"-RING                                 | 1    |
| 43   |           |                | HUB ASSEMBLY, LOCKING                    | 1    |

TITLE

TORQUE HUB ASSEMBLY

PLATE  
NO.

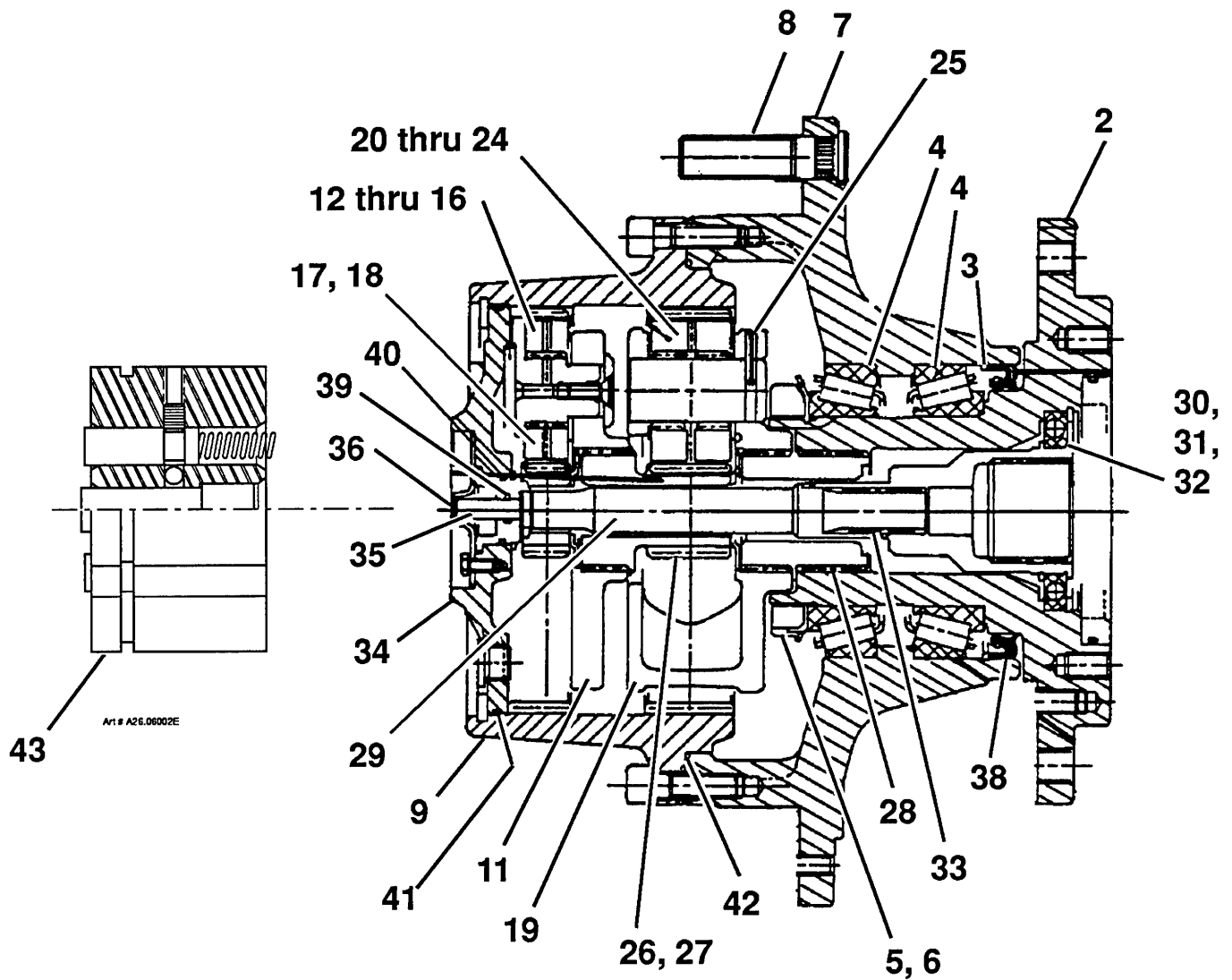
26.06

**SIMON AERIALS INC.**

REV. 11/18/91

PART  
NO.

01-021200



TITLE

TORQUE HUB ASSEMBLY

**SIMON AERIALS INC.**

REV. 11/18/91

PART  
NO.

01-021200

PLATE  
NO.

26.06



## PARTS LIST

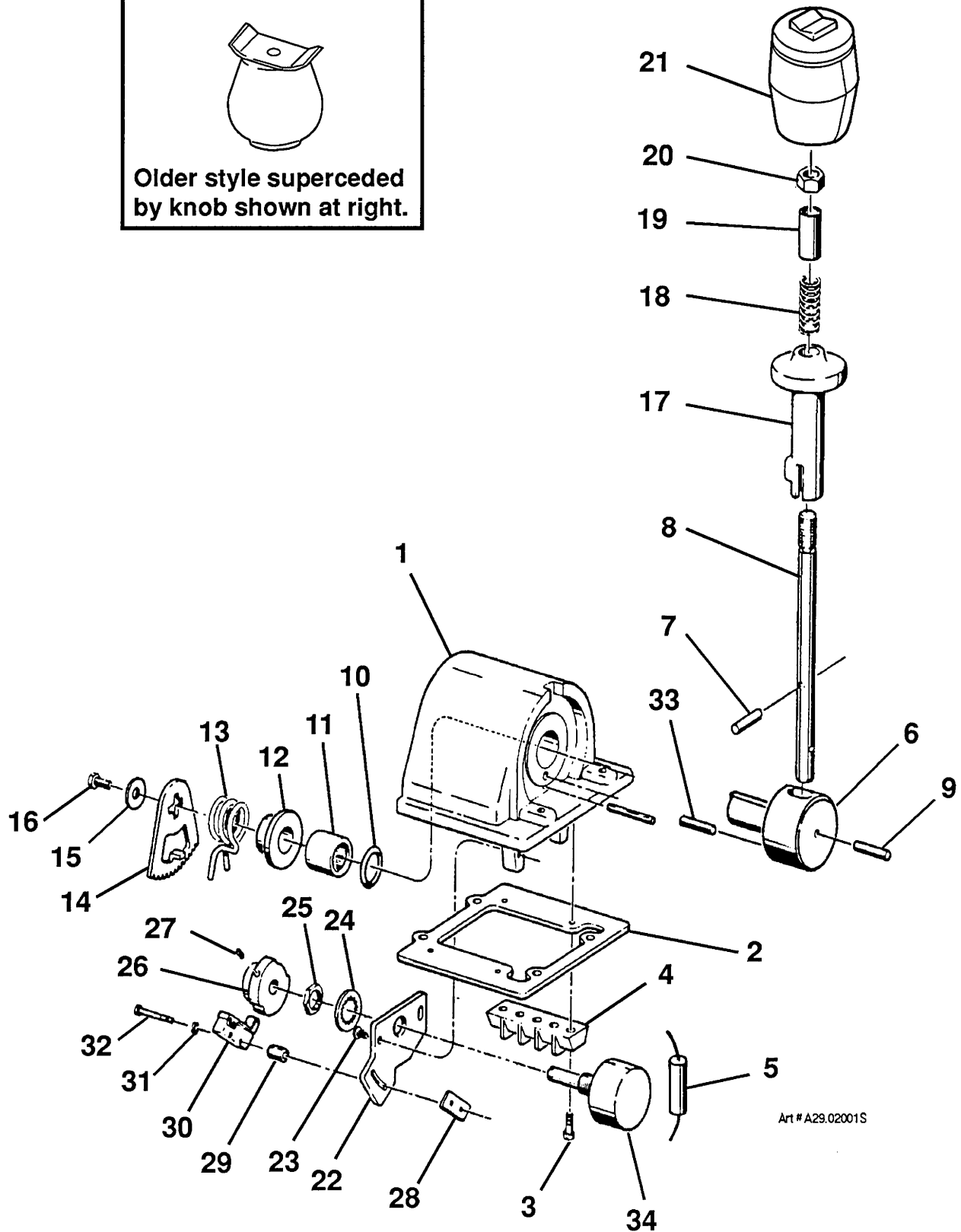
| ITEM | PART NO   | SEE<br>SECTION | DESCRIPTION   | QTY. |
|------|-----------|----------------|---|------|
|      | 03-426400 |                | DRIVE CONTROLLER (does not include item 34)                               |      |
| 1    |           |                | HOUSING, DRIVE CONTROLLER   | 1    |
| 2    | 03-027229 |                | GASKET, PANEL   | 1    |
| 3    |           |                | MACHINE SCREW, FILLISTER HEAD   | 4    |
| 4    | 03-426406 |                | BLOCK, TERMINAL   | 2    |
| 5    | 03-061900 |                | DIODE   | 1    |
| 6    | 03-426405 |                | HANDLE, CONTROL   | 1    |
| 7    |           |                | PIN   | 1    |
| 8    |           |                | EXTENSION, CONTROL HANDLE   | 1    |
| 9    |           |                | PIN, GROOVED  | 1    |
| 10   |           |                | "O"- RING   | 1    |
| 11   |           |                | BEARING, LOW FRICTION   | 1    |
| 12   | 03-027233 |                | GUIDE, SPRING   | 1    |
| 13   | 03-027232 |                | SPRING, TORSION   | 1    |
| 14   | 03-027234 |                | SECTOR, GEAR  | 1    |
| 15   |           |                | WASHER, FLAT (SAE)  | 1    |
| 16   |           |                | MACHINE SCREW, HEX HEAD   | 1    |
| 17   | 03-027221 |                | SLIDE LOCK, CONTROL HANDLE  | 1    |
| 18   | 03-027215 |                | SPRING, SLIDE LOCK  | 1    |
| 19   | 03-027219 |                | SLEEVE, HANDLE  | 1    |
| 20   |           |                | NUT, HEX  | 1    |
| 21   | 03-426407 |                | GRIP ASSEMBLY, ROCKER SWITCH  | 1    |
| 22   |           |                | PLATE, POTENTIOMETER MOUNTING   | 1    |
| 23   |           |                | MACHINE SCREW, PAN HEAD   | 2    |
| 24   |           |                | WASHER, LOCK  | 1    |
| 25   |           |                | NUT, HEX  | 1    |
| 26   | 03-426404 |                | SPUR GEAR AND CAM   | 1    |
| 27   |           |                | SET SCREW, HEX SOCKET   | 1    |
| 28   |           |                | PLATE, FASTENER   | 1    |
| 29   |           |                | SPACER  | 2    |
| 30   | 03-037400 |                | SWITCH, ROLLER LEVER<br>(supercedes part numbers 03-027217 and 03-426402) | 2    |
| 31   |           |                | WASHER, LOCK  | 2    |
| 32   |           |                | MACHINE SCREW, FILLISTER HEAD   | 2    |
| 33   |           |                | PIN, GROOVED  | 1    |
| 34   | 03-432000 |                | POTENTIOMETER (250 Ohm)   | 1    |

|              |       |                                       |              |                     |
|--------------|-------|---------------------------------------|--------------|---------------------|
| TITLE        |       | DRIVE CONTROLLER ASSEMBLY (JOY STICK) |              |                     |
| PLATE<br>NO. | 29.03 | SIMON AERIALS INC.                    | NEW 11/06/91 | PART<br>NO. 3515850 |





Older style superseded  
by knob shown at right.



Art # A29.02001S

TITLE

DRIVE CONTROLLER ASSEMBLY (JOY STICK)

**SIMON AERIALS INC.**

NEW 11/06/91

PART  
NO.

3515850

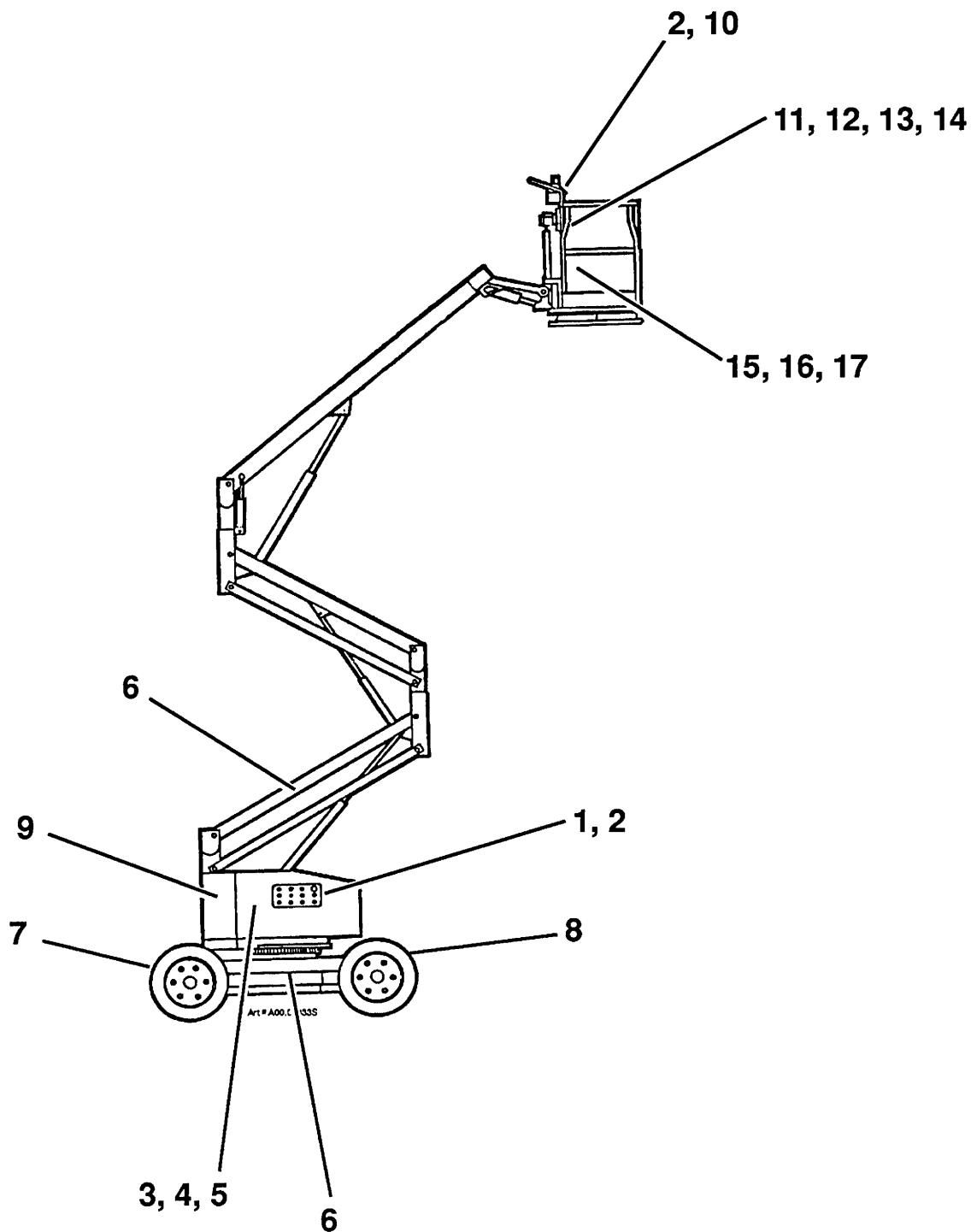
PLATE  
NO.

29.03

[illegible]

## DECALS, 41/24 EAGLE (SPECIAL)

PART  
NO.



TITLE

DECALS, 41/24 EAGLE (SPECIAL)

**SIMON AERIALS INC.**

NEW 11/18/91

PART  
NO.

PLATE  
NO.

99.10